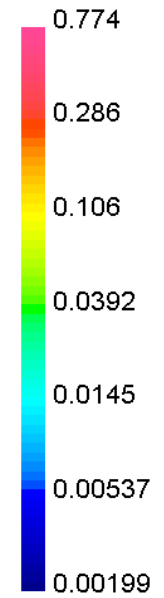
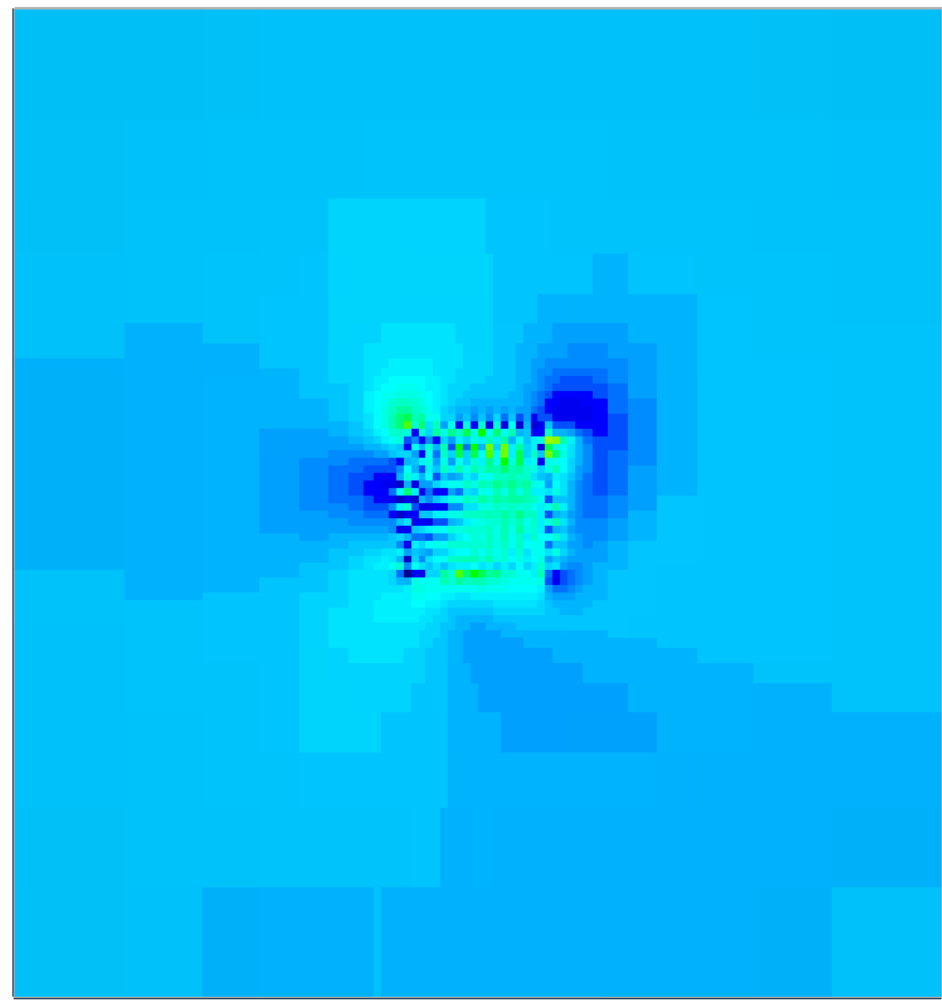
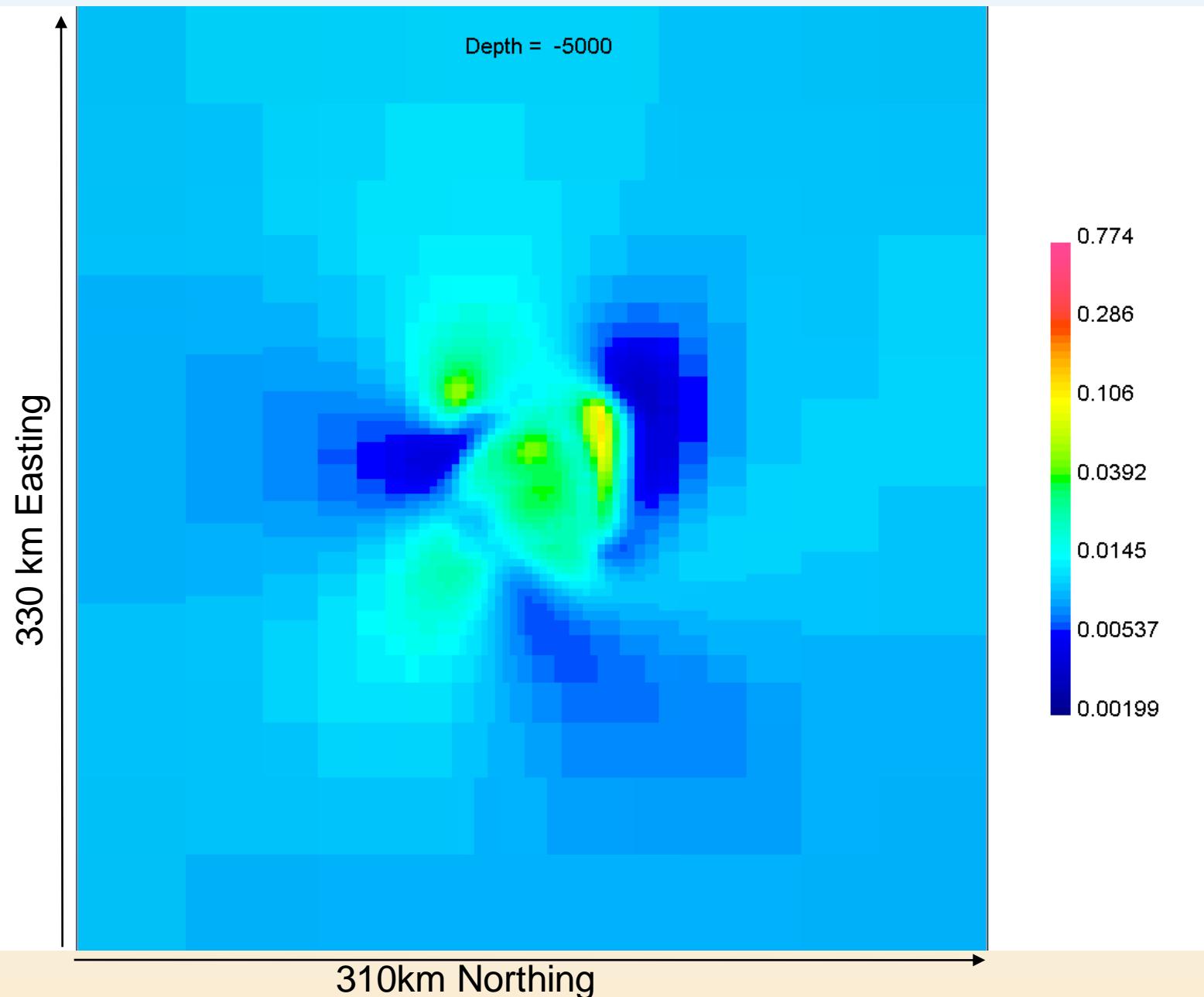


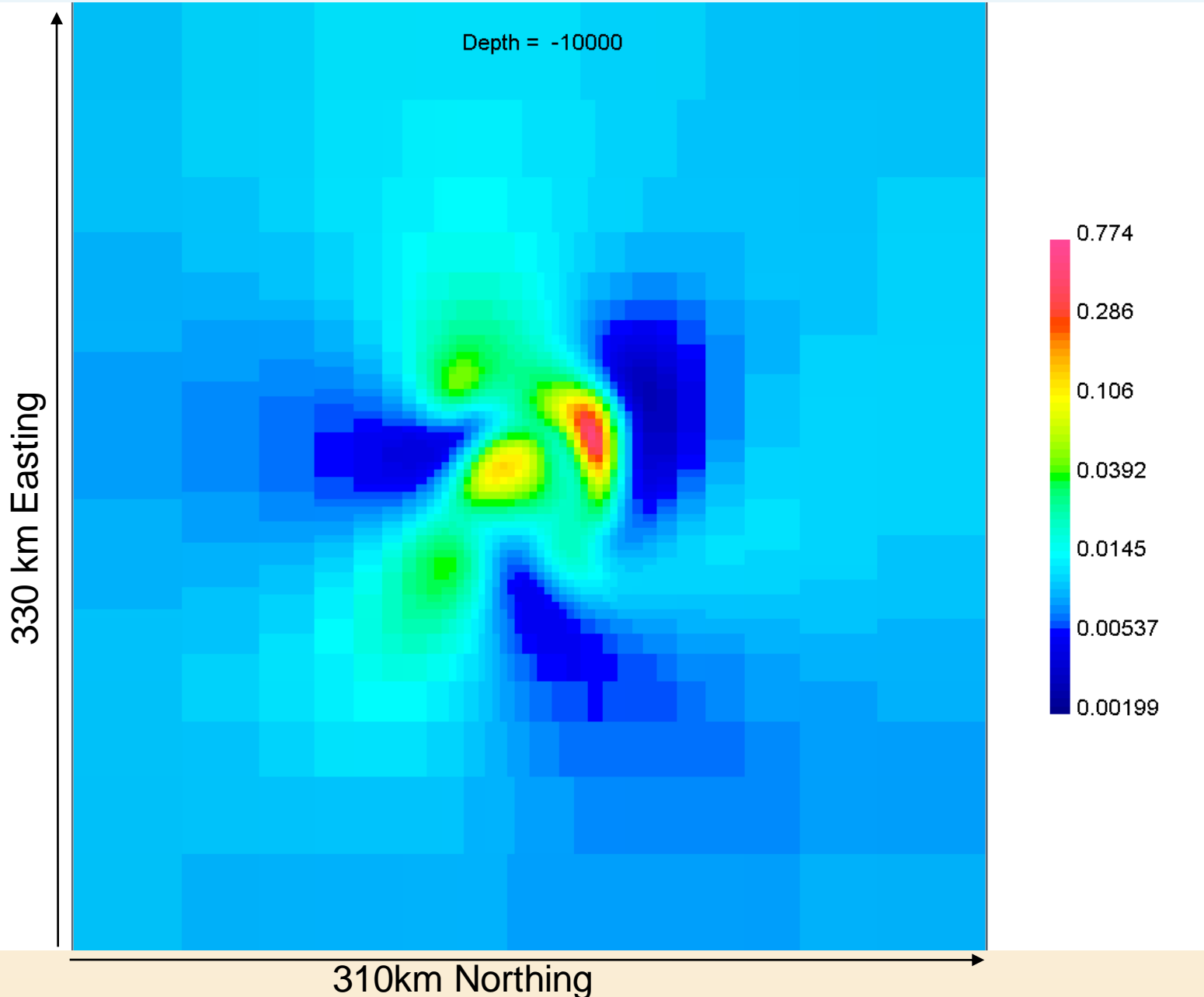
10000s, 1000s, 100s Inversion Using all Sites



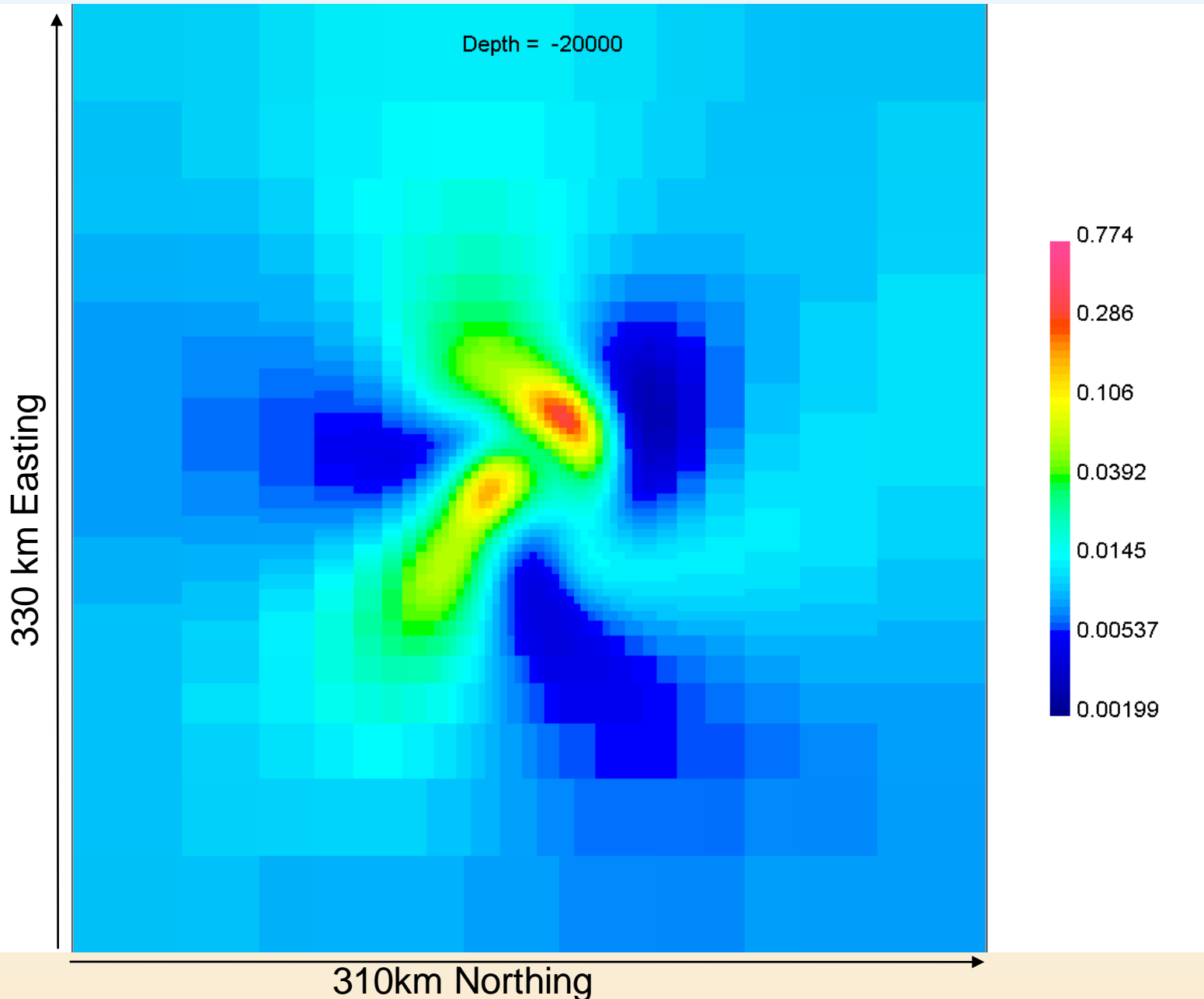
10000s, 1000s, 100s Inversion



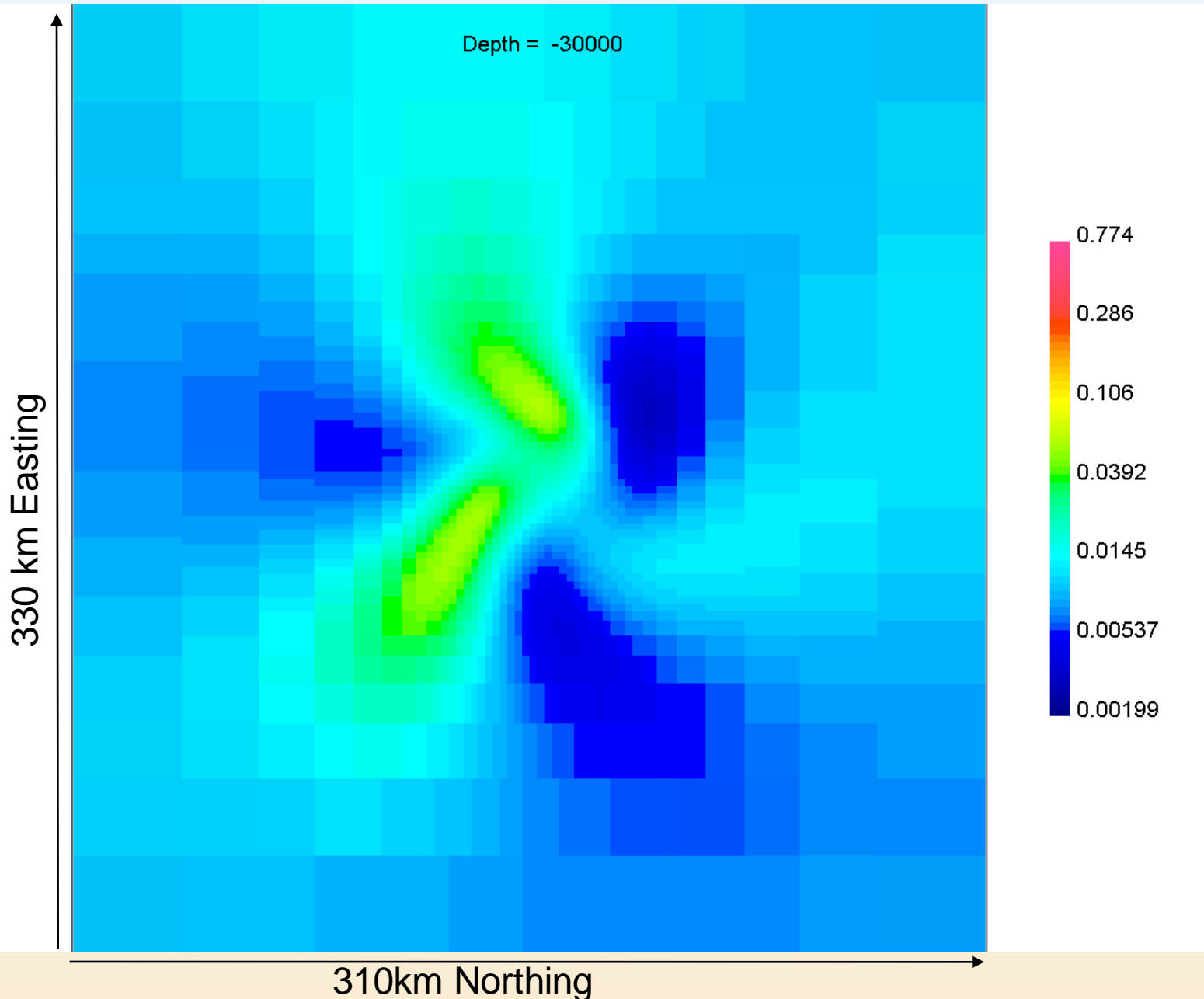
10000s, 1000s, 100s Inversion



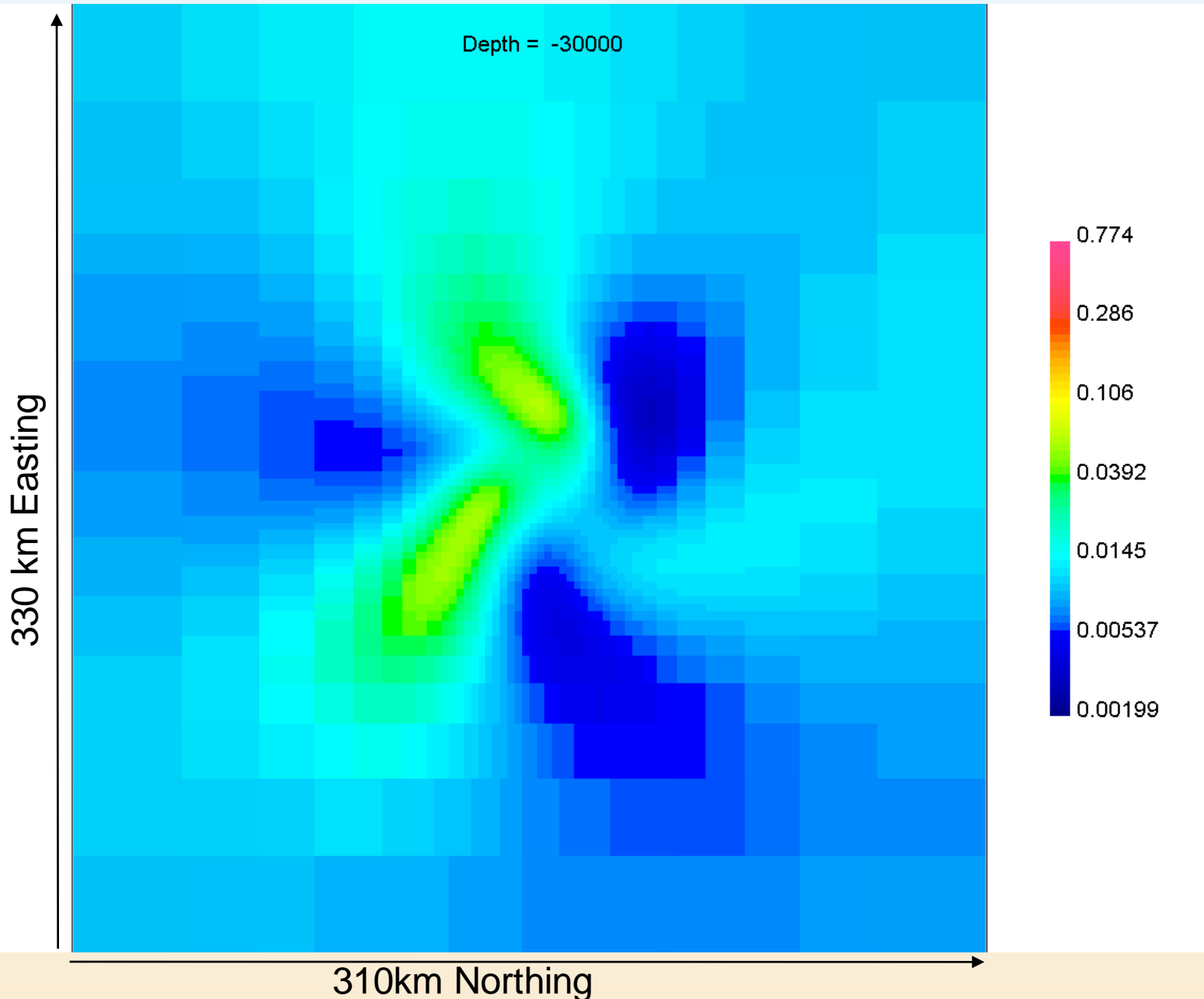
10000s, 1000s, 100s Inversion



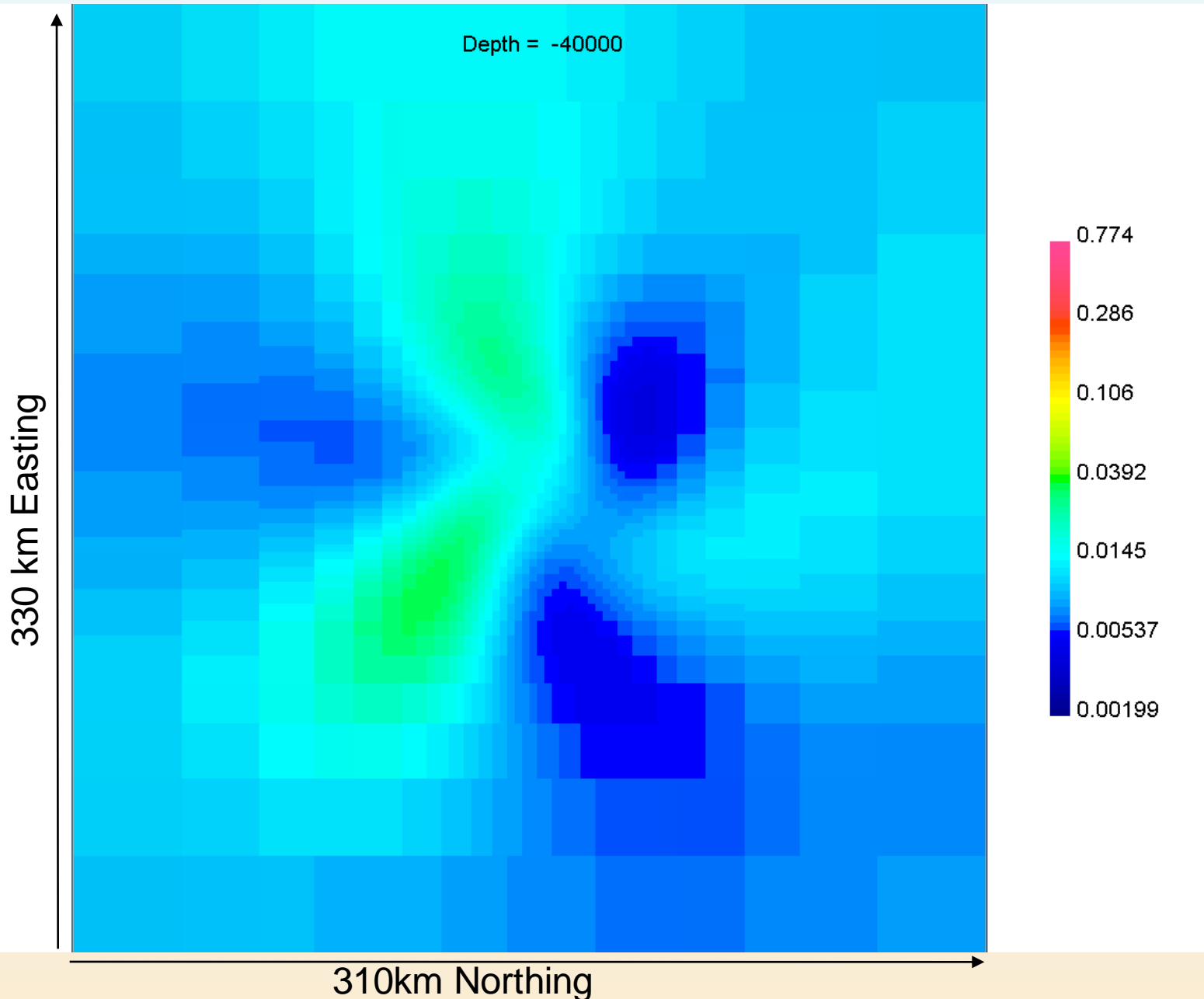
10000s, 1000s, 100s Inversion



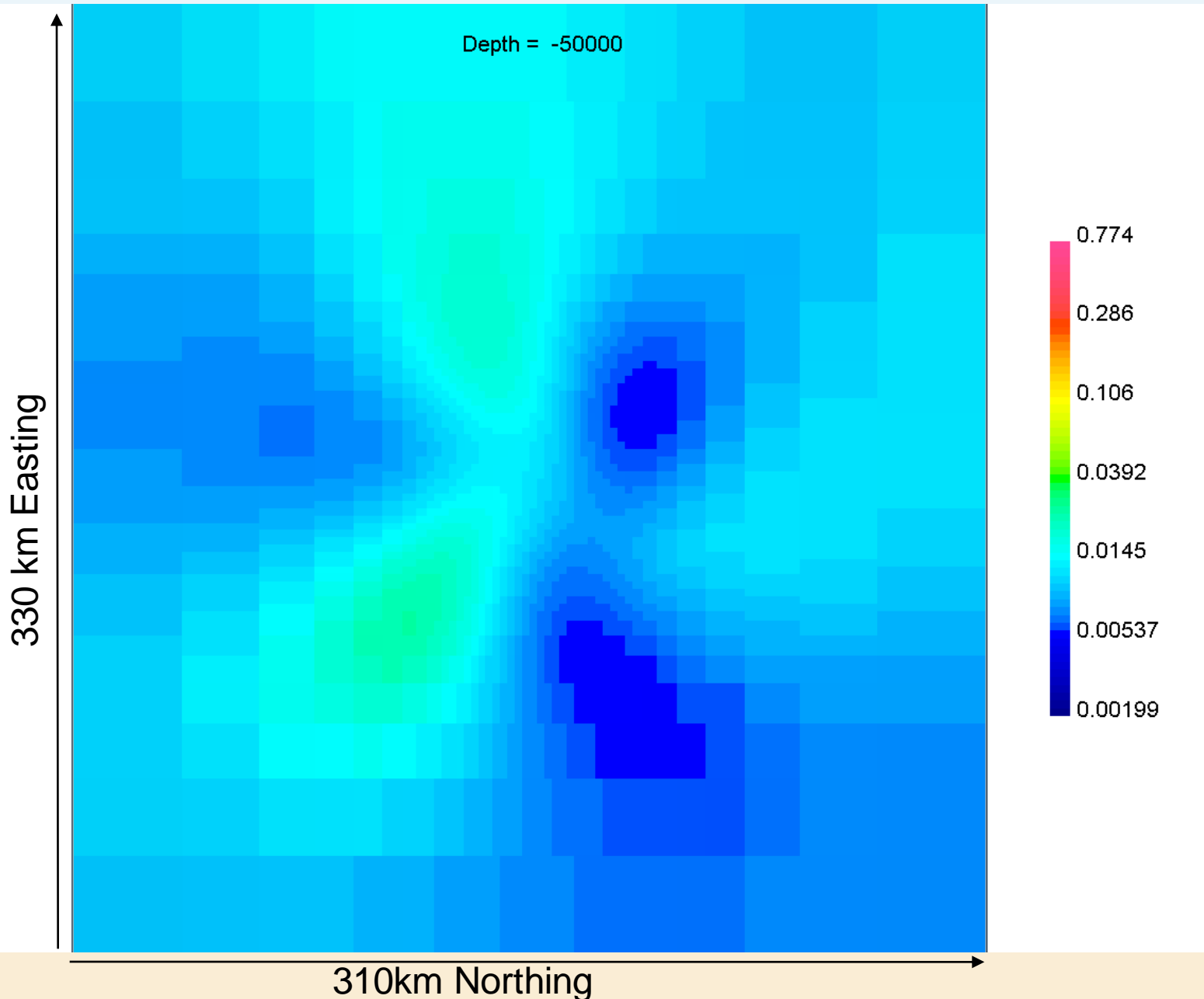
10000s, 1000s, 100s Inversion



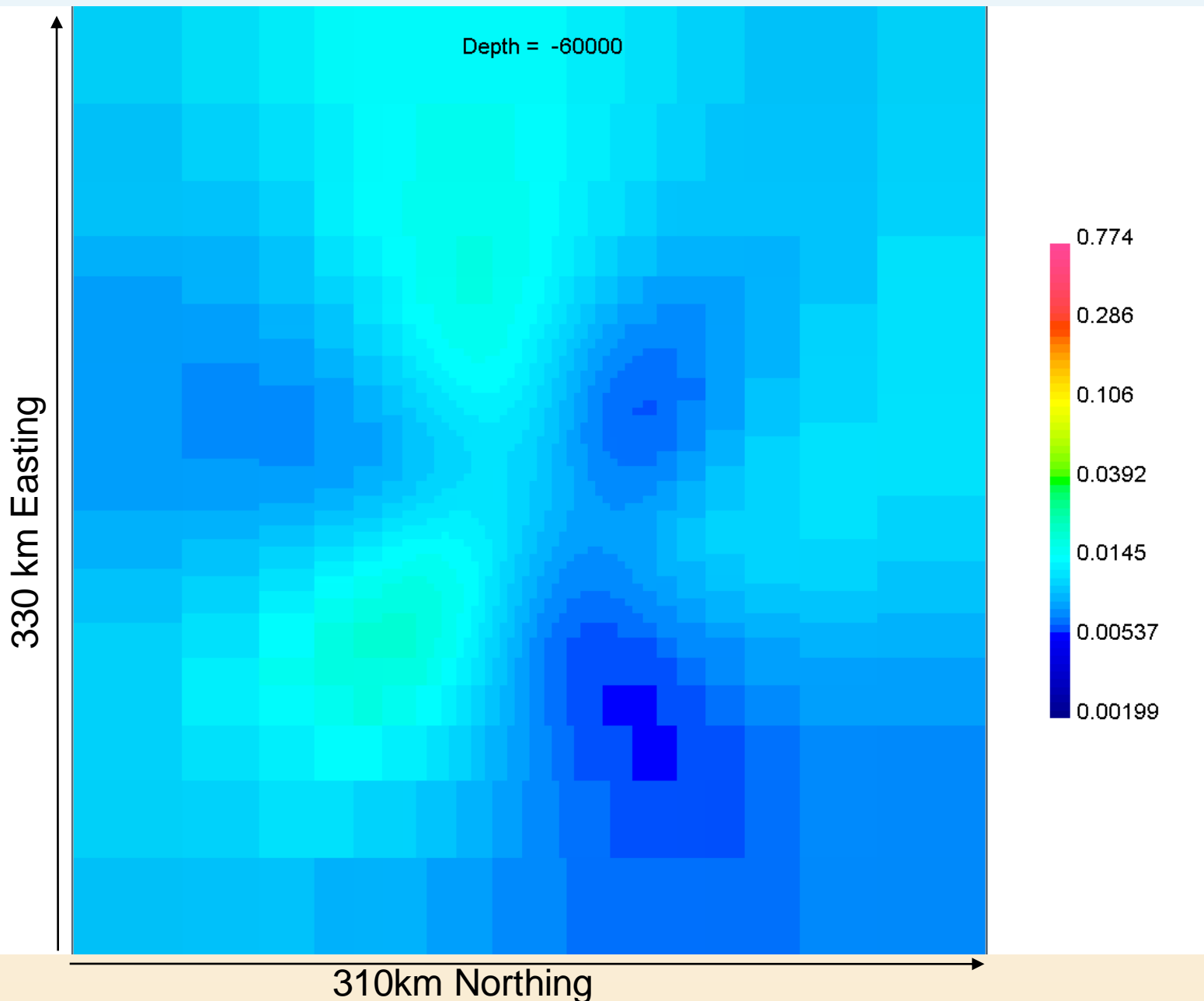
10000s, 1000s, 100s Inversion



10000s, 1000s, 100s Inversion

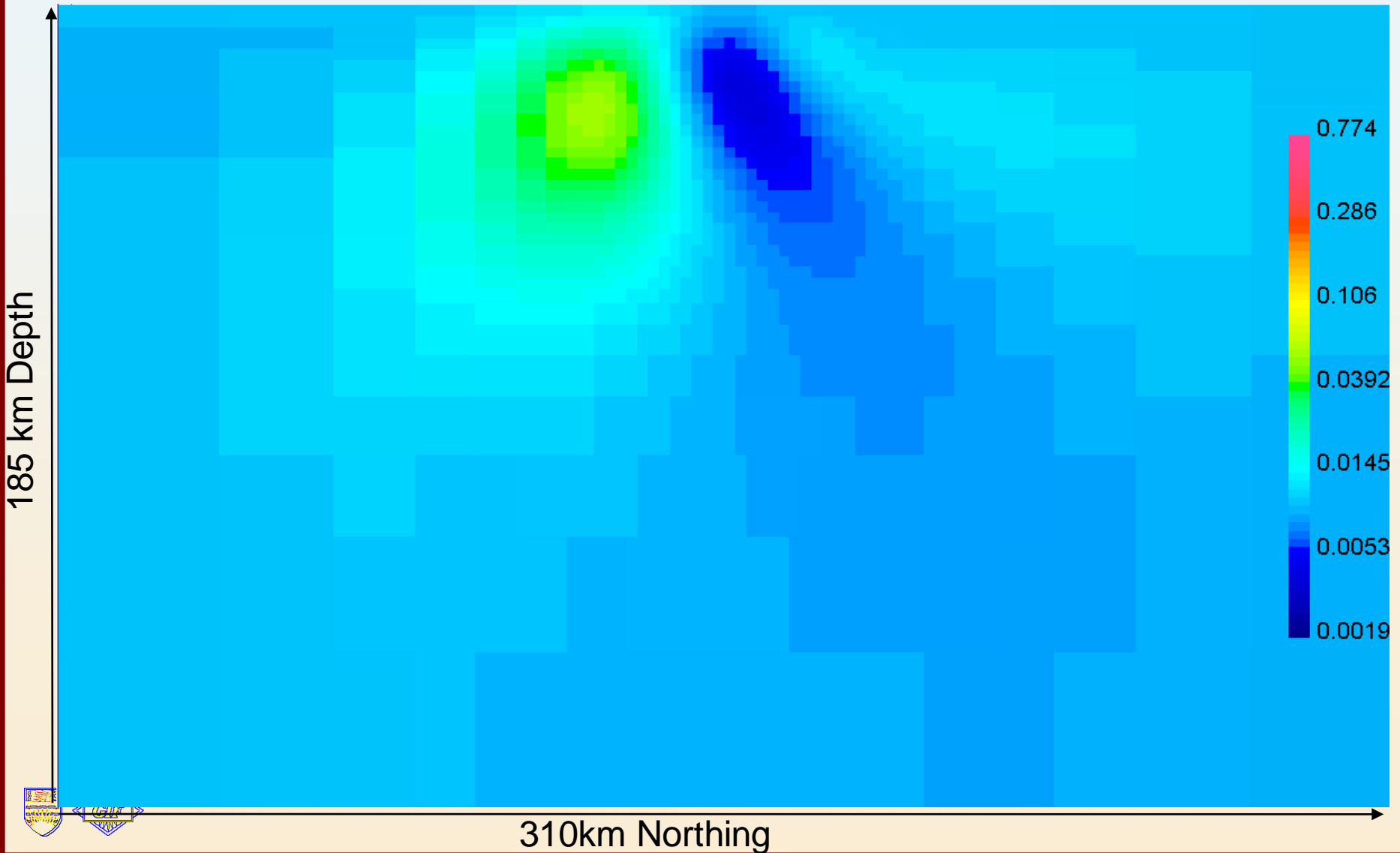


10000s, 1000s, 100s Inversion



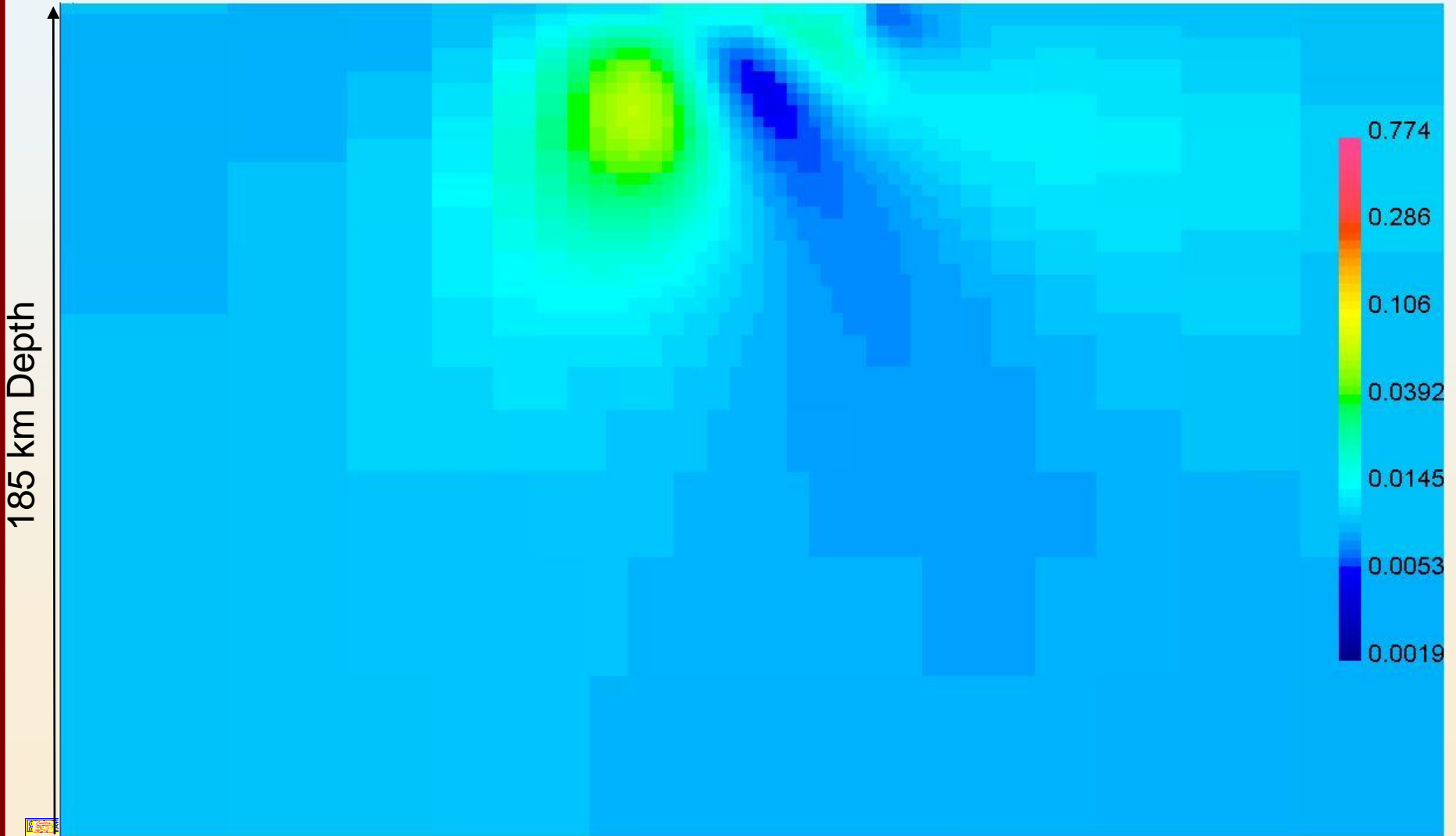
10000s, 1000s, 100s Inversion

Easting -40000



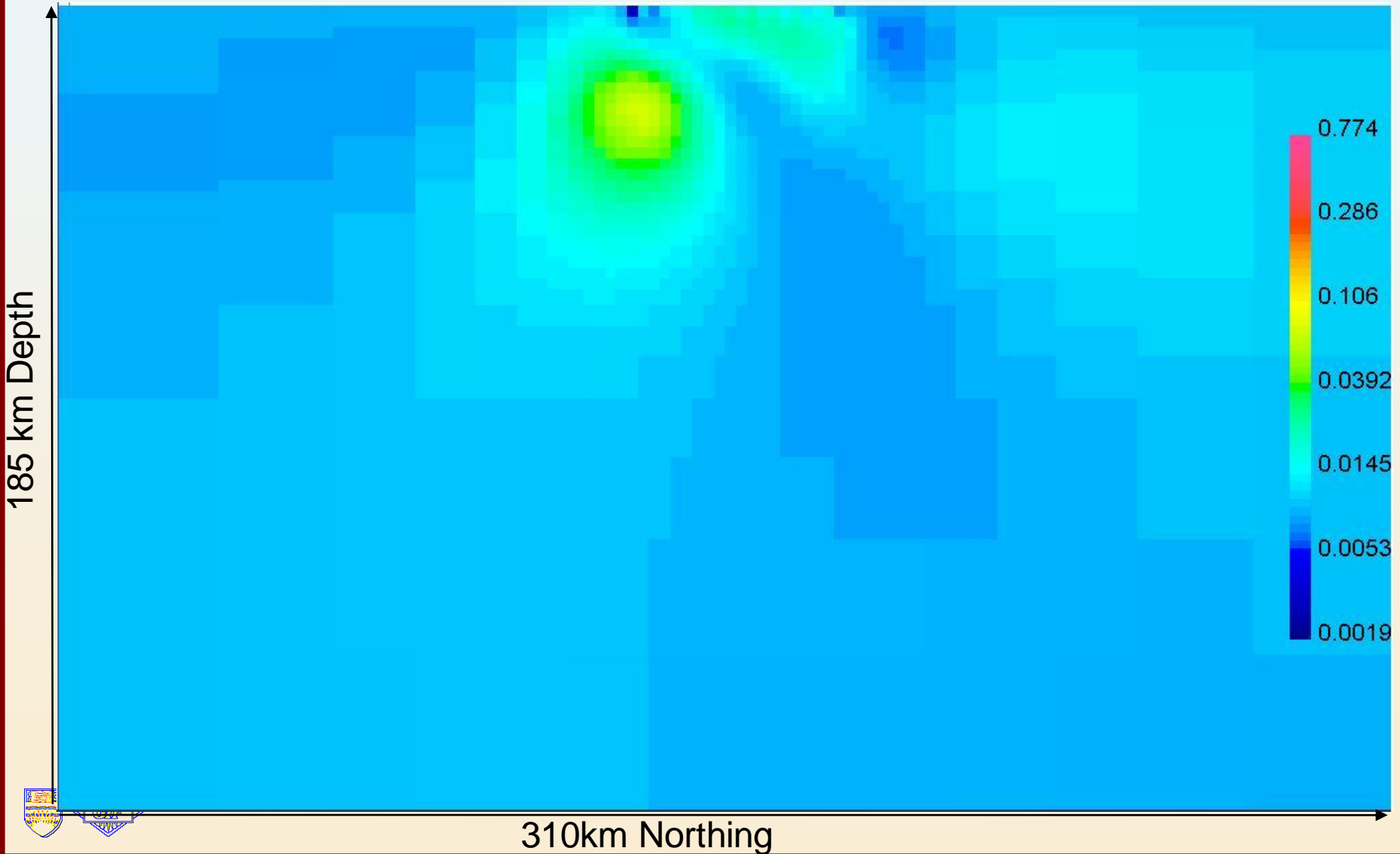
10000s, 1000s, 100s Inversion

Easting -30000



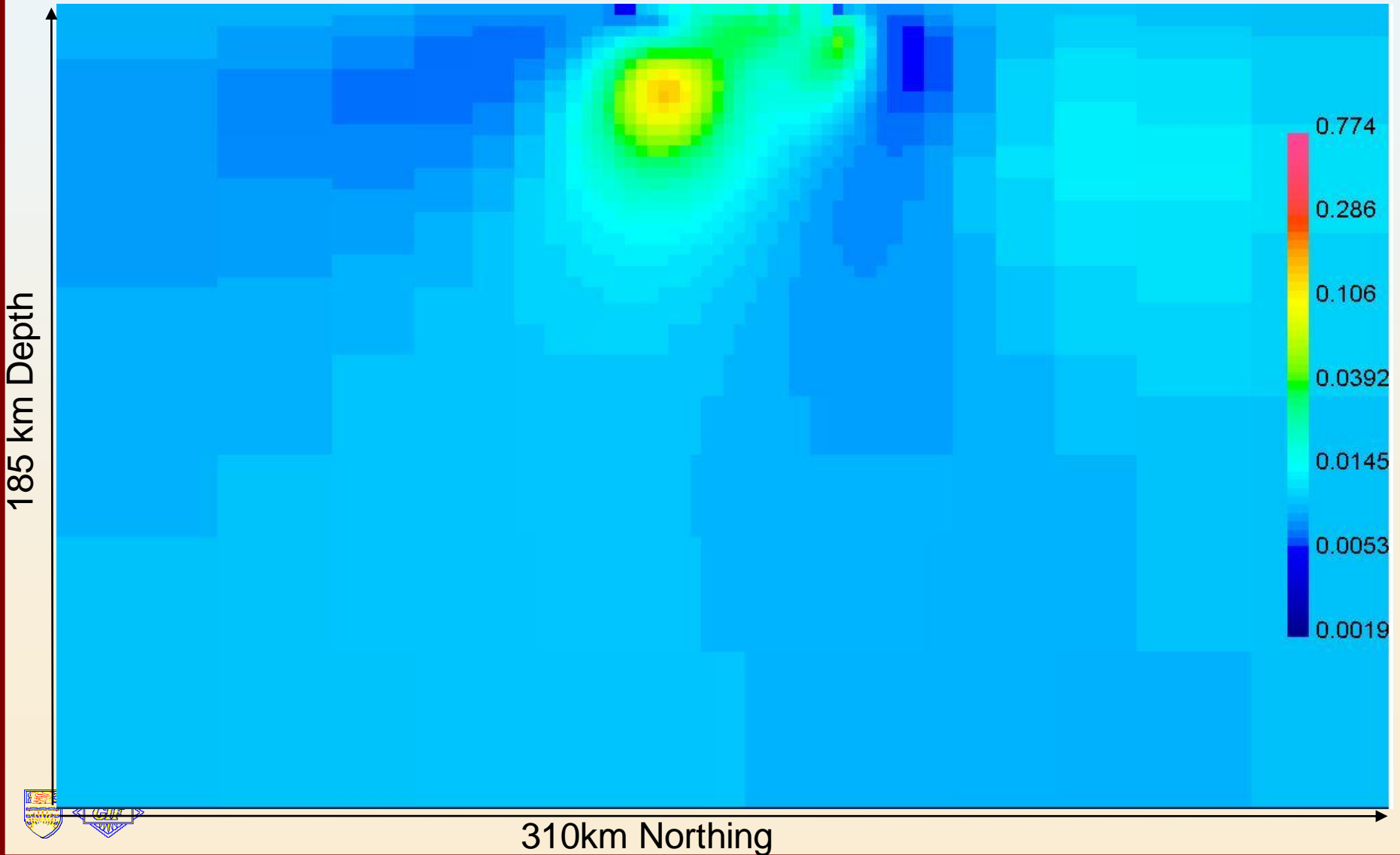
10000s, 1000s, 100s Inversion

Easting -20000



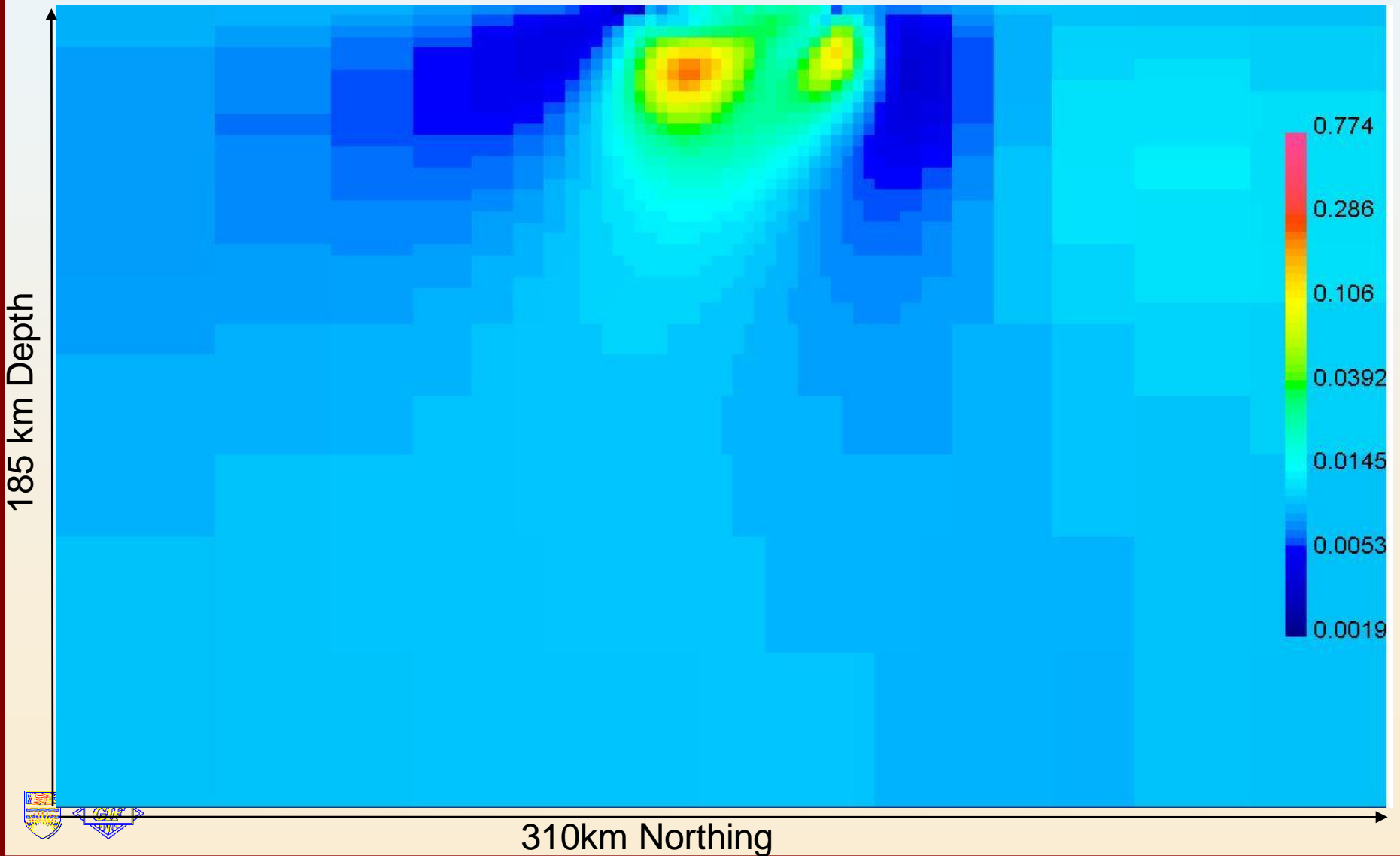
10000s, 1000s, 100s Inversion

Easting -10000



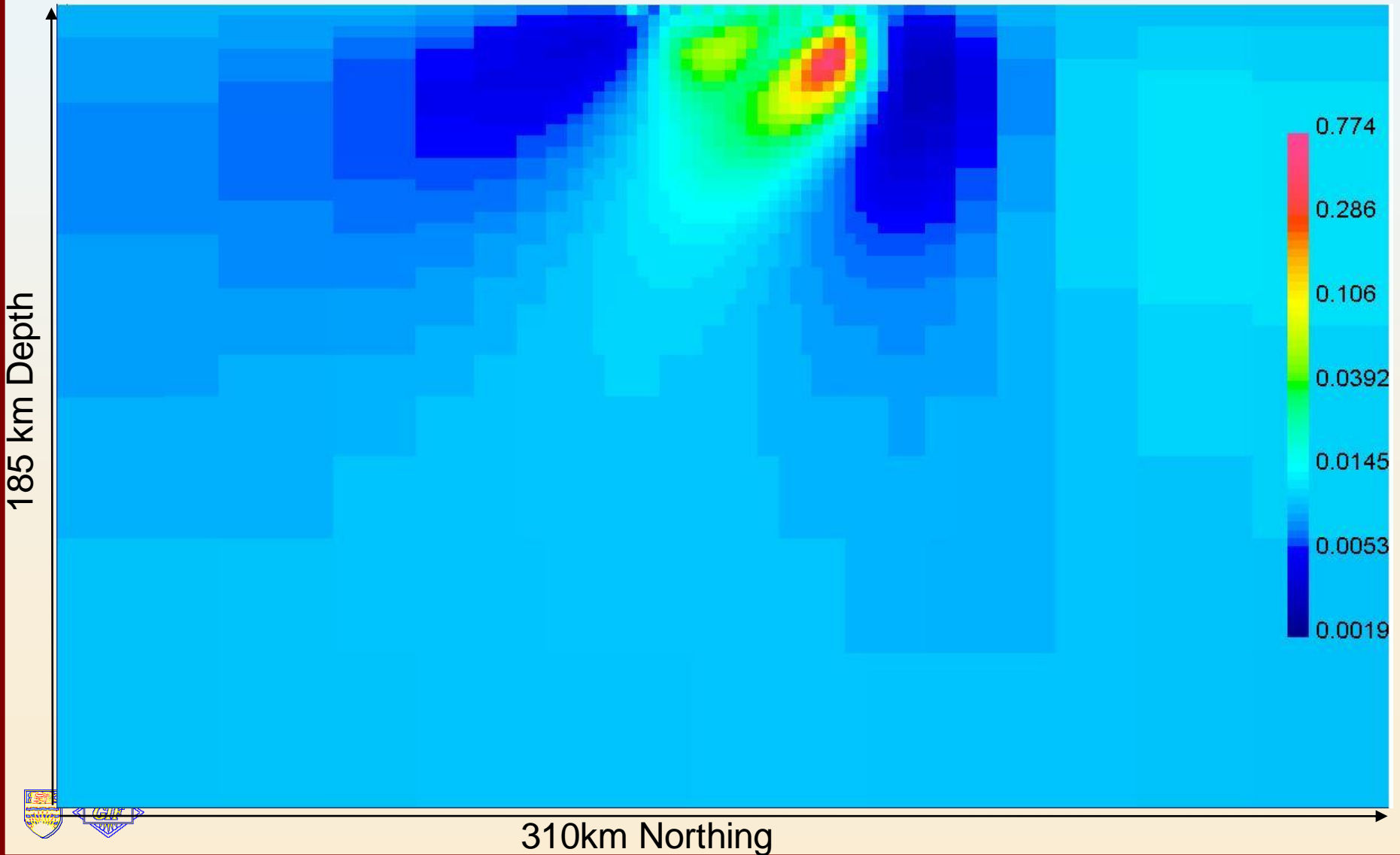
10000s, 1000s, 100s Inversion

Easting 0



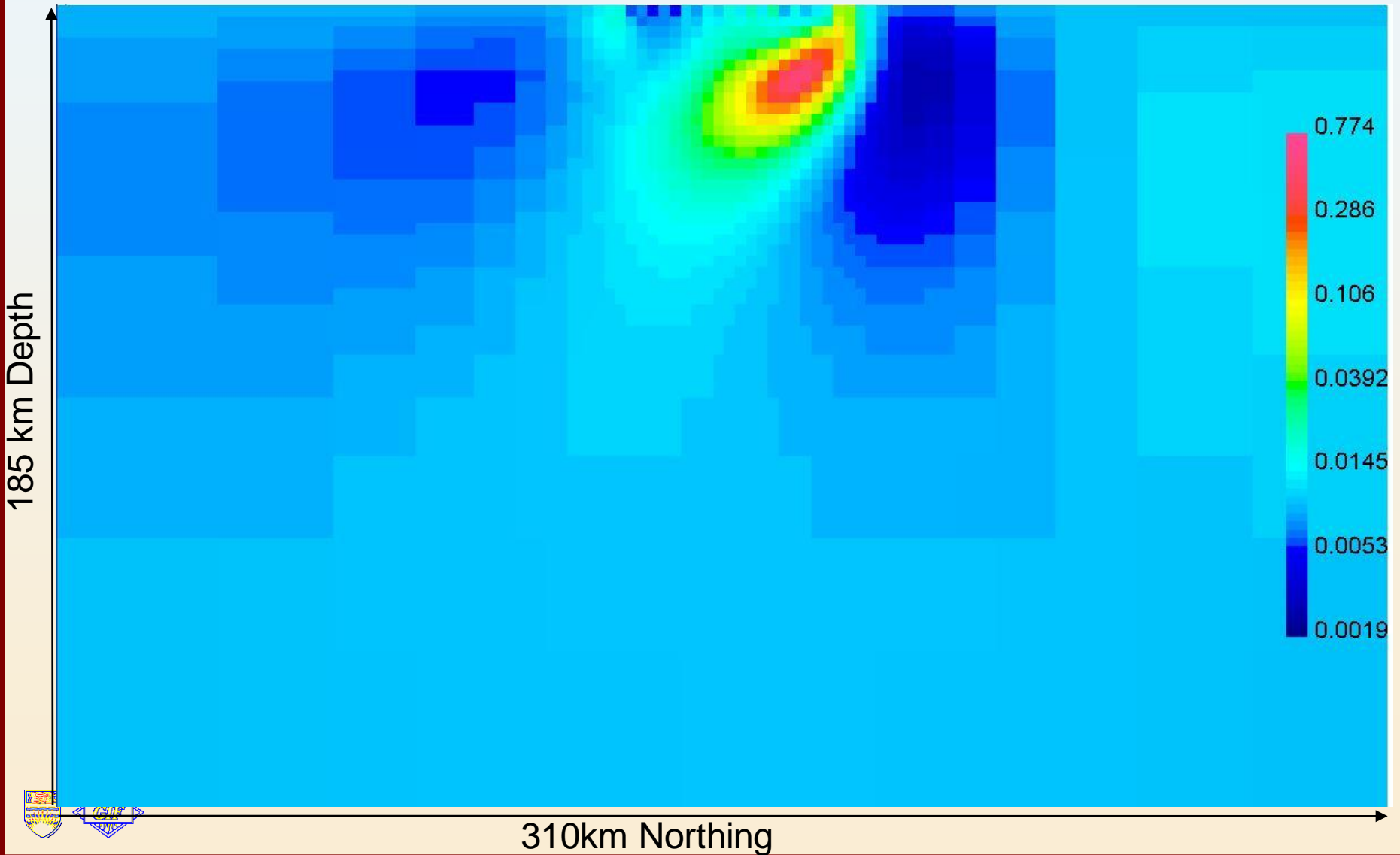
10000s, 1000s, 100s Inversion

Easting 10000



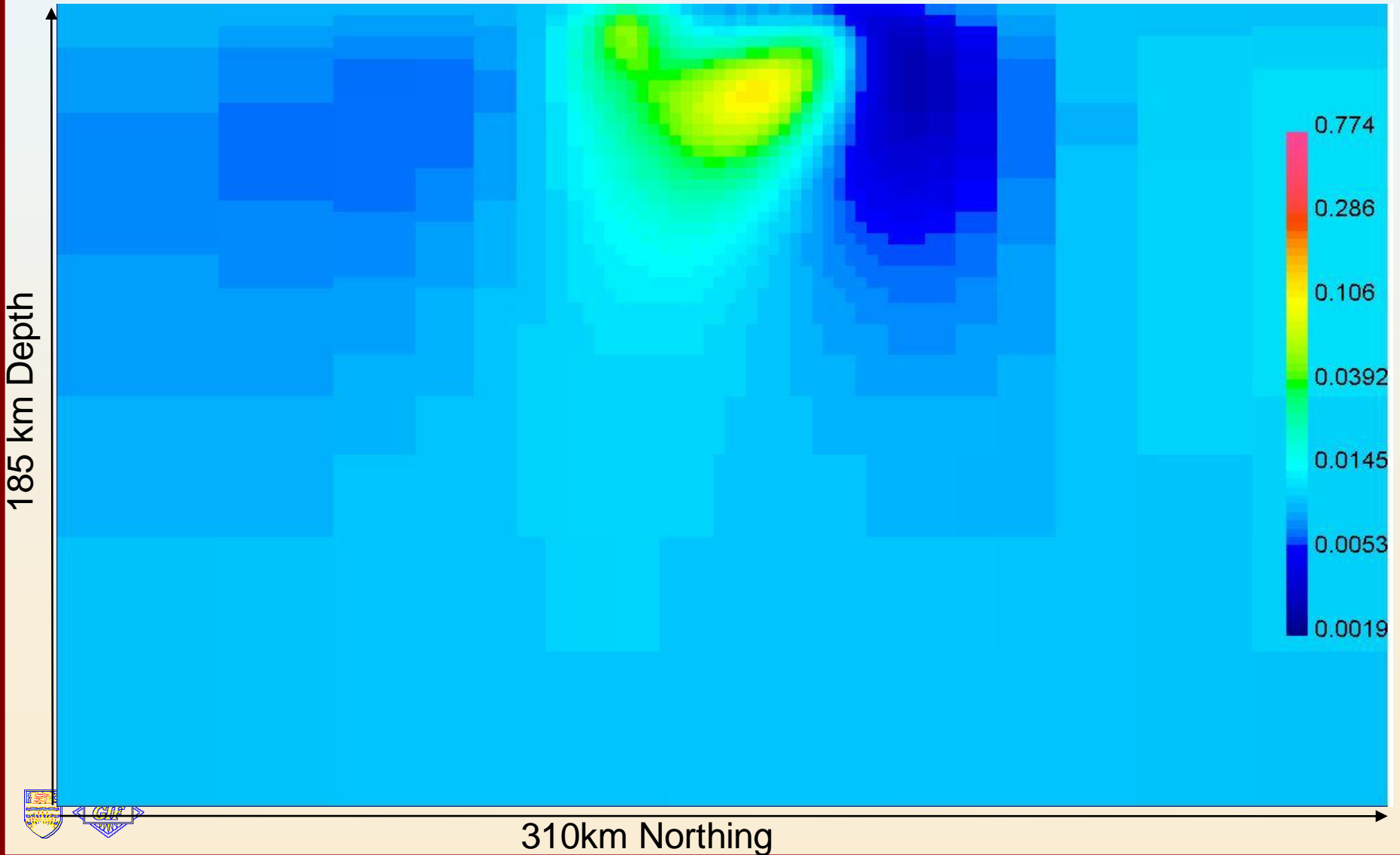
10000s, 1000s, 100s Inversion

Easting 20000



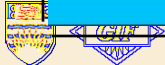
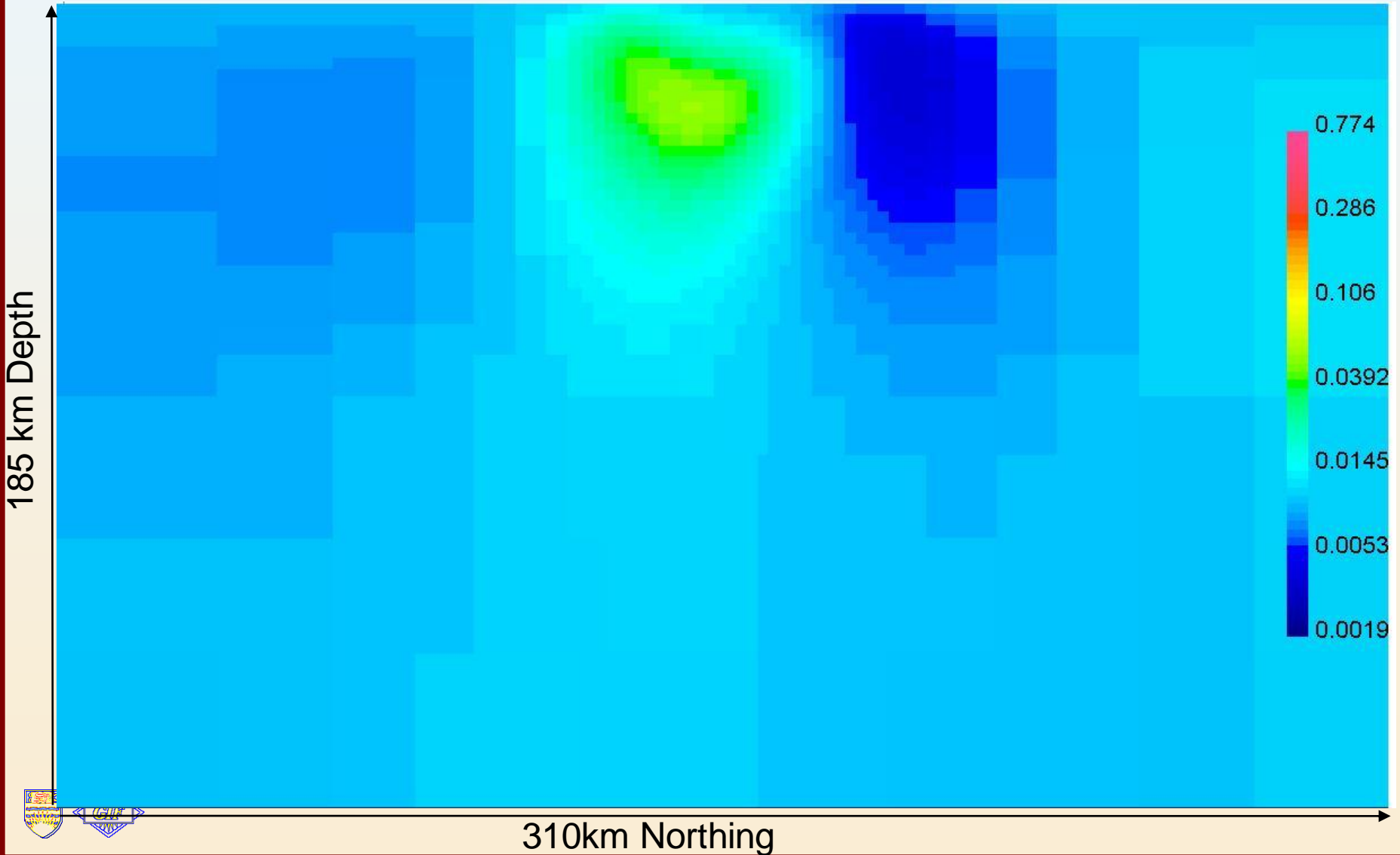
10000s, 1000s, 100s Inversion

Easting 30000



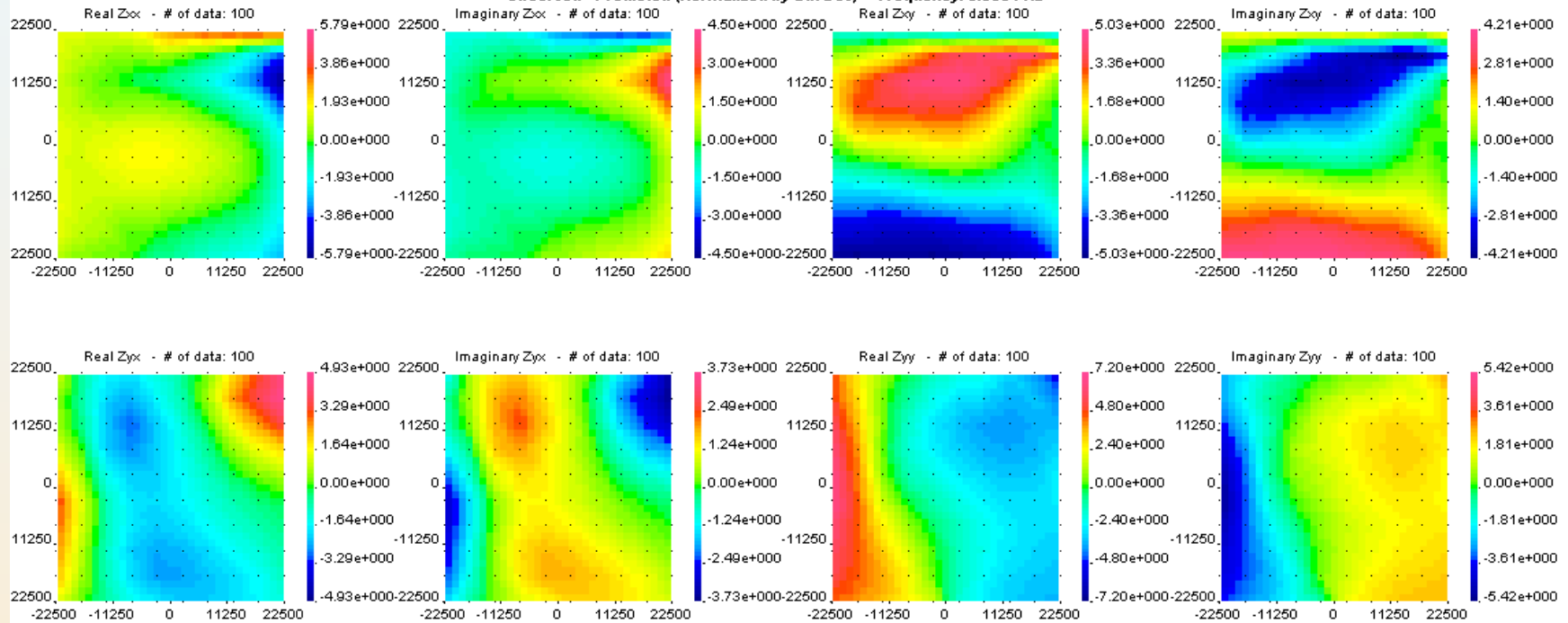
10000s, 1000s, 100s Inversion

Easting 40000



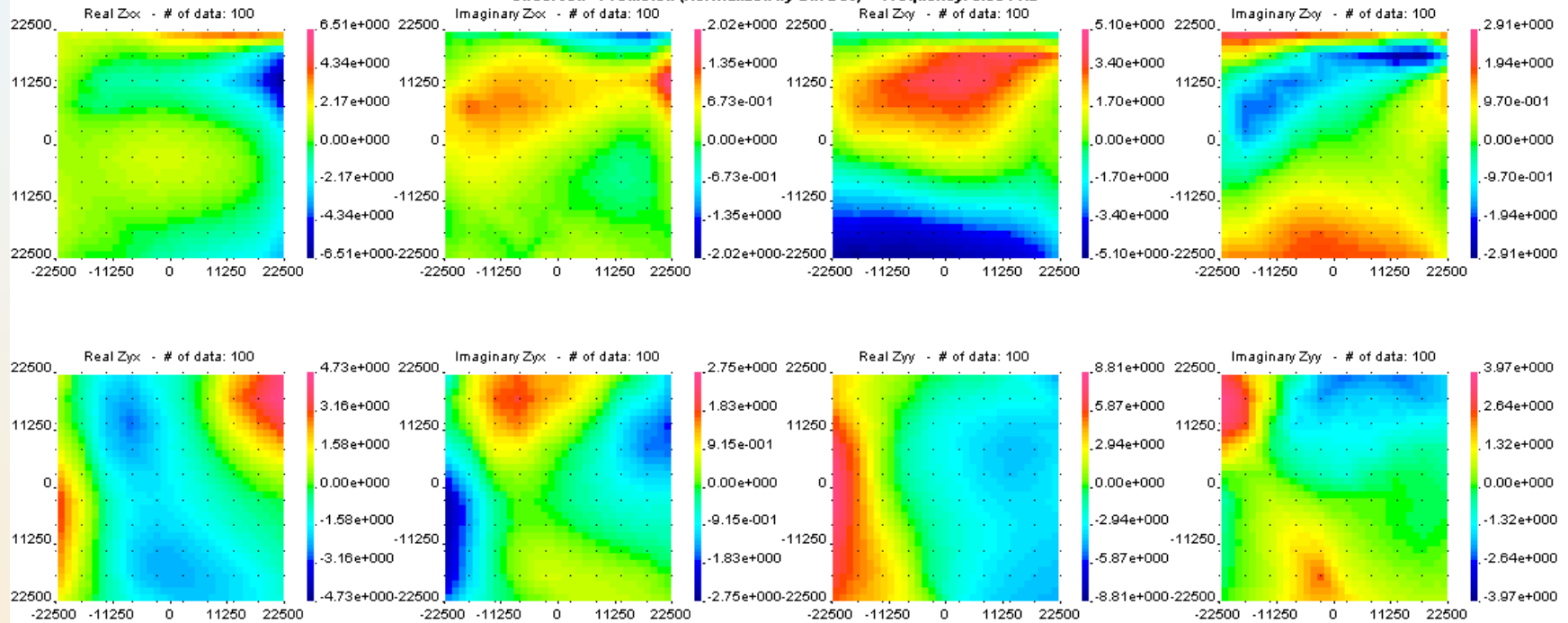
Data Misfit of 10000s period data

Observed - Predicted (Normalized by Stn Dev) Frequency: 0.0001 Hz



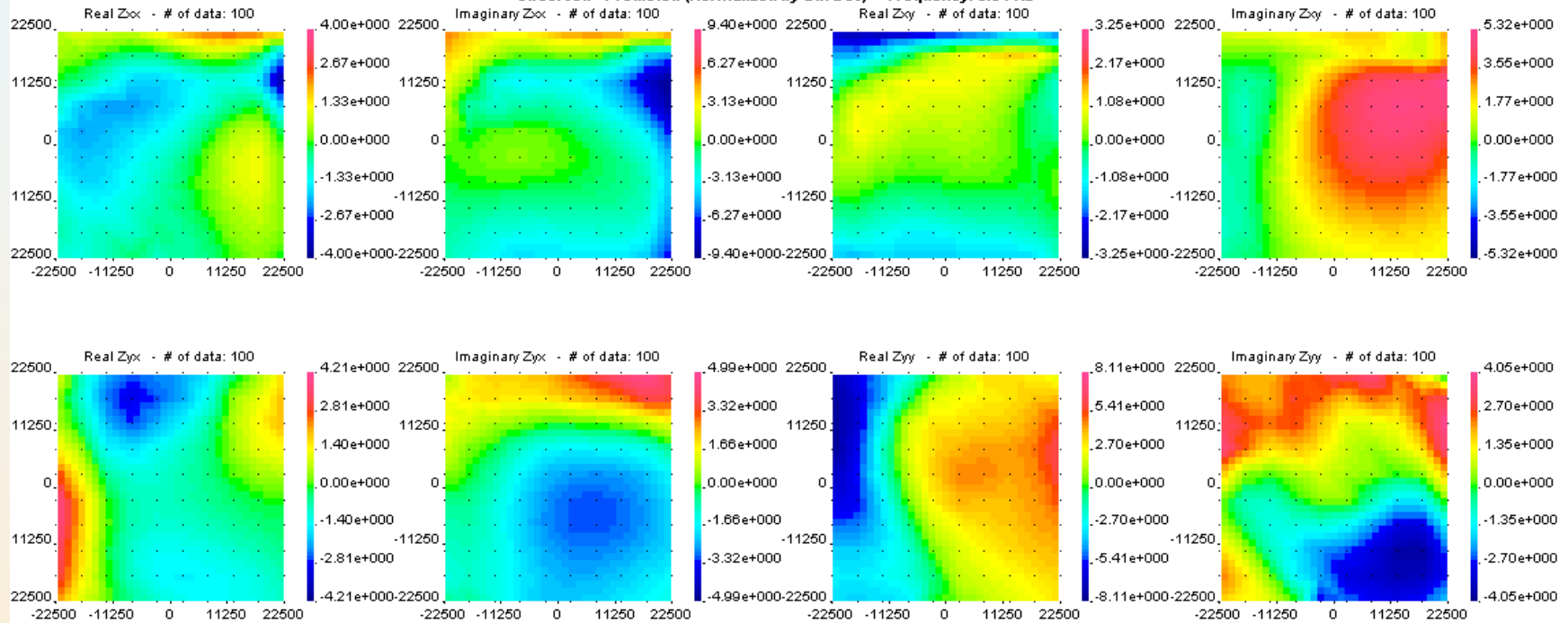
Data Misfit of 1000s period data

Observed - Predicted (Normalized by Stn Dev) Frequency: 0.001 Hz



Data Misfit of 100s period data

Observed - Predicted (Normalized by Stn Dev) Frequency: 0.01 Hz



Convergence of 10000s 1000s 100s inversion

target misfit: $2.40000\text{E}+03$

final misfit: $1.22638\text{E}+04$

TOTAL cpu time: around 100 hours

