

Duality, the Semi-Circle Law and Quantum Hall Bilayers

C.P. Burgess^{1,2} and B.P. Dolan^{3,4}

¹ *Department of Physics and Astronomy, McMaster University,
1280 Main Street West, Hamilton, Ontario, Canada, L8S 4M1.*

² *Perimeter Institute, 31 Caroline Street North, Waterloo, Ontario, Canada.*

³ *Dept. of Mathematical Physics, National University of Ireland, Maynooth, Ireland.*

⁴ *School of Theoretical Physics, Dublin Institute for Advanced Studies, 10 Burlington Rd., Dublin, Ireland.*

e-mail: cburgess@perimeterinstitute.ca, bdolan@thphys.nuim.ie

(Dated: 9th January 2007)

There is considerable experimental evidence for the existence in Quantum Hall systems of an approximate emergent discrete symmetry, $\Gamma_0(2) \subset SL(2, Z)$. The evidence consists of the robustness of the tests of a suite of predictions concerning the transitions between the phases of the system as magnetic fields and temperatures are varied, which follow from the existence of the symmetry alone. These include the universality of and quantum numbers of the fixed points which occur in these transitions; selection rules governing which phases may be related by transitions; and the semi-circular trajectories in the Ohmic-Hall conductivity plane which are followed during the transitions. We explore the implications of this symmetry for Quantum Hall systems involving *two* charge-carrying fluids, and so obtain predictions both for bilayer systems and for single-layer systems for which the Landau levels have a spin degeneracy. We obtain similarly striking predictions which include the novel new phases which are seen in these systems, as well as a prediction for semicircle trajectories which are traversed by specific combinations of the bilayer conductivities as magnetic fields are varied at low temperatures.

PACS numbers: 73.43.-f, 05.30.Fk, 02.20.-a

I. INTRODUCTION

Quantum Hall systems continue to provide remarkable laboratories for studying the rich dynamics which is possible for strongly-correlated electron systems in two spatial dimensions. The now-classic studies of the many Hall plateaux found within systems for which only the first Landau level is occupied¹, were later supplemented by the discovery of new and remarkable phenomena in systems involving higher Landau levels², and the discovery of evidence for new superfluid phases in bilayer systems, involving two or more Quantum Hall layers which are spaced sufficiently closely to allow inter-layer coherence and correlations³.

Although the microscopic picture of the electron physics in these systems is well understood in terms of the Laughlin wave-function⁴ — at least for those systems for which only the first Landau level is occupied — it is also useful to have a purely long-wavelength description of the effective degrees of freedom which are relevant (in the renormalization-group – RG – sense) for the low-energy transport measurements. As is well-known from the study of superconductors (for which the BCS theory can be understood as the relevant effective description for energies near the superconducting gap⁵), such a long-distance description complements the microscopic picture by identifying the domain of validity of the low-energy predictions and so thereby allowing a better understanding of the robustness of various low-energy phenomena.

For Quantum Hall systems the large number of available ground states (compared, for example to a BCS

superconductor) complicates the low-energy description of the theory, and the detailed form of the effective theory applicable at mK temperatures is not yet fully understood. However there is growing evidence that for the single-layer, lowest-Landau-level systems the renormalization-group flow at such temperatures is described by a two-parameter family of conformal field theories which govern the transitions between the various possible Quantum Hall plateaux.

Although the detailed form of these conformal field theories is not yet known, there is evidence that the scaling flow within them commutes with a large discrete group, $\Gamma_0(2) \subset SL(2, Z)$. Indeed, much of the data concerning the transitions between plateaux follows very robustly simply from the existence of this symmetry⁶. (We call this a ‘symmetry’ even though it relates distinct phases of the system, rather than commuting with the Hamiltonian describing low-energy fluctuations within any one phase. We use this name because the group *is* a symmetry of the scaling flow.) On the theoretical side this symmetry was first proposed on both phenomenological⁷ and then on more microscopic grounds⁸, before being derived as a consequence of particle-vortex duality for the relevant charge carriers⁹ and then on very general grounds for two-dimensional conformal field theories¹¹. The increasing generality of the assumptions which enter into these derivations helps to explain the surprisingly broad domain of validity of the observations, which apply well beyond the immediate vicinity of the critical points to which they were originally expected to be restricted. Indeed the more recent derivations show these symmetries even go beyond the domain

of linear response¹², in agreement with observations¹³.

As yet, there has not been an exhaustive study of the implications of this emergent discrete symmetry for the physics of spin-degenerate Landau levels¹⁴ or of bilayer systems. It is the purpose of this paper to do so, and we find that the symmetry has a number of observational implications, including the following.

- *The Symmetry:* In the single-layer case there are two classes of emergent symmetry, depending on whether or not the charge carriers are related by symmetry transformations to bosons or to fermions⁹. The corresponding symmetry for the bilayer system is determined by which of these symmetries applies to the individual layers in the limit where they are independent. Given that all known spin-split monolayer QHE systems appear to be described by the fermionic symmetry, $\Gamma_0(2) \subset SL(2, Z)$, we concentrate for the most part in this paper on the generalization of the purely fermionic symmetry. By combining the symmetries of each separate layer with the symmetry of layer interchange we are led to a particular discrete subgroup $G \subset Sp(4, Z)$. A similar analysis of the group which is appropriate to systems built from ‘bosonic’ layers is straightforward, and is also presented in the event that such layers should be experimentally realized.

- *Low-Temperature Fixed Points:* Since the symmetry commutes with the flow, it makes universal predictions for the kinds of fixed points which are possible at low temperatures. Unlike the monolayer case, there cannot be a one-to-one relation between the experimental variables — temperature, T , magnetic field, B , inter-layer separation, d , and charge carrier density, n_s — and the six conductivities which are possible for composite systems built from bilayers (in principle there could be a one-to-one correspondence for identical bilayers, with only four independent conductivities, but we are not aware of any experimental data that systematically explores the full parameter range). Not all phases can be explored for a given bilayer sample as T , B and d are varied, and a consequence of this observation is that the possible attractive fixed points which are allowed by the symmetries can depend on other microscopic factors, such as the relative importance of tunnelling and inter-layer or intra-layer Coulomb energies. We identify three classes of flow which are consistent with the bilayer symmetry, and identify the universal low-energy fixed points which each predicts. These include all of the known phases which have been observed for these systems, with one describing widely-separated mono-layers, and the other two corresponding to correlated bilayers in two situations distinguished by the relative size of the tunnelling and inter-layer Coulomb energies.

- *Semicircles:* In the single-layer case, when particle-hole symmetry is present, knowledge of the temperature flow implied the system moved on semi-circular trajectories within the conductivity plane when magnetic fields are varied at low temperatures. This conclusion has general-

izations to the three categories of flows described above. In particular, for samples exhibiting particle-hole symmetry, semicircular transitions are again predicted for specific combinations of conductivities in the cases of widely-separated layers and for bilayers with large tunnelling energies.

- *Selection Rules:* We show how the experimentally-successful selection rule, $pq' - p'q = \pm 1$, for monolayer transitions between plateaux characterized by Hall conductivities p/q and p'/q' (in units of e^2/h), generalizes to bilayer systems. For bilayers precisely the same selection rule holds (for particular combinations of conductivities) for all three categories of flow mentioned above.

- *Unresolved Layers:* It is often the case that the separate conductivities are not measured independently for bilayer systems, and we show in this case how the above predictions reduce to the case where only the total conductivity is measured. This allows the predictions of the symmetry to be applied more directly to single-layer systems for which it is the electron spins (or other labels) which distinguish the two layers. The predictions in this case include the existence of even-denominator states and the selection rule becomes $pq' - p'q = \pm s$, where $s = 1$ or 2 , depending on which of the three categories of flow is under consideration. For systems with particle-hole symmetry there should be semicircular transitions between these states.

II. EMERGENT SYMMETRY OF THE LOW-ENERGY THEORY

In this section we briefly describe the properties of the emergent symmetry in the bosonic and fermionic cases, starting first with a restatement of what is known for a single conducting fluid (as appropriate to a spin-split Landau level in a monolayer sample) and then generalizing to the case of two fluids (as would apply to a spin-degenerate layer or a bilayer consisting of two spin-split Quantum Hall systems).

A. Single-Layer Case

It is the case of a spin-split single Landau level which has been longest studied, and we follow here the description of ref.⁹. In this reference it is argued that there are two operations which commute with the scaling flow in the low-energy limit of any system in two spatial dimensions for which the quasi-particle charge carriers relevant to transport measurements are weakly-coupled particles or vortices. These two generators do not commute with one another and their repeated application generates a large discrete group which resides within $SL(2, Z)$.

In two dimensions particle statistics is described by an angle, φ , which represents the phase, $e^{i\varphi}$, which the particles acquire if they are adiabatically moved around

one another. The first of the symmetry operations which must commute with the flow is simply the addition of 2π statistics flux to the relevant charge-carrying quasiparticles, since this does not change at all the accumulated phase.

The second symmetry generator arises when the quasiparticles relevant for transport in some of the system's phases are weakly-coupled vortices rather than charges. In this case the similar kinematics of charges and vortices in 2 dimensions implies the flow commutes with the operation of particle-vortex interchange.

Ref.⁹ shows that these two operations have a very simple action on the electromagnetic response of the 2D system, which for conductors and semi-conductors acts on the complex conductivities $\sigma \equiv \sigma_{xy} + i\sigma_{xx}$ as a fractional linear transformation:

$$\sigma \rightarrow \frac{a\sigma + b}{c\sigma + d}, \quad (1)$$

where the integers a , b , c and d satisfy $ad - bc = 1$. Because this is invariant under a change of sign for the constants a through d , this defines the group $PSL(2, Z)$. It is convenient to express the transformations of this type in terms of two standard ones:

$$S(\sigma) = -\frac{1}{\sigma} \quad \text{and} \quad T(\sigma) = \sigma + 1, \quad (2)$$

which satisfy the identity $(ST)^3 = 1$. For instance, the implications for the conductivities of the addition of 2π statistics flux to the charge carriers can be written in terms of these generators as the combination ST^2S , or $\sigma \rightarrow \sigma'$, with

$$\frac{1}{\sigma'} = \frac{1}{\sigma} - 2. \quad (3)$$

It is the specific values taken by the integers a through d for the particle-vortex interchange which differs in the bosonic and fermionic cases, so we next consider each of these separately.

1. Fermionic Symmetry

If the charge carriers for one of the system's phases are fermions (or related to fermions by a symmetry transformation), then the implications for the conductivities of interchanging a particle with a vortex is $\sigma \rightarrow \sigma'$ with

$$\sigma' = \frac{\sigma - 1}{2\sigma - 1}. \quad (4)$$

The group generated by iterating this transition with that of eq. (3) consists of all $PSL(2, Z)$ transformations for which c is even, which defines the subgroup $\Gamma_0(2)$. This group is generated by the two generators T and ST^2S .

It is the requirement that the flow commute with this infinite discrete group which strongly restricts the general

form of the temperature flow in Quantum Hall systems, and when supplemented with a symmetry interchanging particles and holes (*i.e.* $\sigma \rightarrow 1 - \sigma$) completely determines a particular class of semicircular flow lines⁶. Combining this with a boundary condition at high temperatures (or vanishing magnetic field, *etc.*) to fix the overall direction of flow leads to the desired observational consequences.

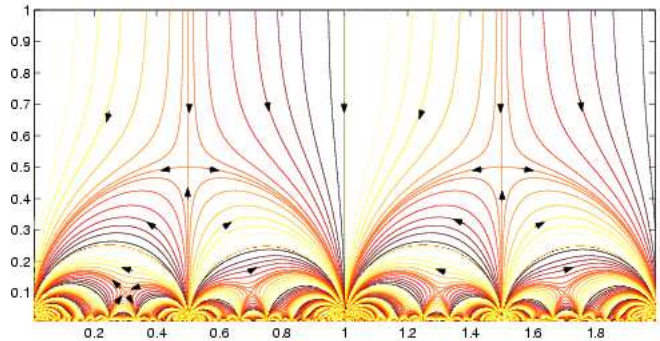


Figure 1: Temperature flow lines for the $\Gamma_0(2)$ -invariant flow of σ . The arrows on the figure indicate the flow direction for decreasing temperature, assuming the samples behave as monolayer semiconductors when $B = 0$.

For instance, assuming the flow direction at large σ_{xx} (or at $\sigma_{xy} = 0$) corresponding to a semiconducting monolayer sample leads to the temperature flow shown in Figure 1, where the arrows indicate the direction of decreasing temperature. Among the consequences of this flow are the following universal properties

- M1 The flow as temperatures go to zero is towards the attractive fixed points, the complete list of which is $\sigma = p/q$ with q odd.
- M2 The plateaux, $\sigma = p/q$ and $\sigma' = p'/q'$, which may be connected by a semicircle must satisfy the selection rule $pq' - p'q = \pm 1$.
- M3 If particle-hole interchange ($\sigma \rightarrow 1 - \bar{\sigma}$) is also a symmetry then at low temperatures the flow between plateaux obtained as magnetic fields are varied traverses a semicircle in the complex conductivity plane, with the semicircle centered on the real axis⁶. This includes also vertical lines, which may be regarded as infinitely large semicircles, leading to the curves shown in Figure 1.

These describe very well the observed transitions which are seen in the spin-split single-layer Quantum Hall systems in semiconducting hetero-junctions.

2. Bosonic Symmetry

On the other hand, if the charge carriers for one of the system's phases should be bosons (or related to them by a symmetry transformation), then the group generated

by iterating Particle-Vortex interchange with 2π statistics flux addition consists of all those $PSL(2, Z)$ transformations for which both b and c are even, or for which both are odd. This defines the subgroup Γ_θ , which is generated by the two generators S and ST^2S (or equivalently S and T^2). This symmetry was first suggested in connection with the quantum Hall effect in ref.¹⁶.

It is the requirement that the flow commute with this group dictates its observational consequences⁶. These include the last two consequences listed above for fermionic systems, but the first consequence is instead changed to

M1' The flow as temperatures go to zero is towards the attractive fixed points, the complete list of which is $\sigma = p/q$, where p and q are relatively prime and the product pq must be even.

Notice in this case that the selection rule M2 requires transitions to be between plateaux for which $p/q = \text{even/odd}$ and those for which $p/q = \text{odd/even}$.

Because the fixed points differ between the cases of bosons and fermions, the precise properties of the semicircles predicted in the bosonic and fermionic cases differ in detail. Pictures of the allowed semicircles in both cases are given in ref.⁹. Unlike for the fermionic case, experimental systems exhibiting these predictions were not known, although the recent observations of Quantum Hall phenomena in graphene may provide the first example¹⁵.

B. Double-Layer Case

For Quantum Hall bilayers there are more conductivities which are accessible to observations, since there are Ohmic and Hall conductivities for each layer separately, σ_{11} and σ_{22} , as well as the inter-layer conductivities, $\sigma_{12} = \sigma_{21}$. Here the labels ‘1’ and ‘2’ distinguish the two layers, and each of the σ_{ij} are complex numbers, whose real part gives the corresponding Hall conductivity and whose imaginary part gives the Ohmic conductivity.

Our interest is to generalize the discrete symmetry of the single-layer case to the bilayer context, and it is convenient for this purpose to group these complex conductivities into a complex matrix

$$\Sigma = \begin{pmatrix} \sigma_{11} & \sigma_{12} \\ \sigma_{21} & \sigma_{22} \end{pmatrix}. \quad (5)$$

In this case we know that the flow must commute with the action of the discrete symmetry when it is applied to each layer separately. If the layers are identical we may also demand that the flow commute with the symmetry corresponding to the interchange of the two layers. This leads us to expect there to be a total of 5 independent symmetry generators in the bilayer case.

In terms of the matrix Σ these transformations form a subgroup of the discrete group

$$\Sigma \rightarrow (A\Sigma + B)(C\Sigma + D)^{-1}, \quad (6)$$

where the 2×2 matrices A , B , C and D have integer entries. Denoting the transpose by the superscript ‘ t ’, these matrices must satisfy the conditions $AB^t = BA^t$, $CD^t = DC^t$ and $AD^t - BC^t = 1$. The four matrices A , B , C and D , with this constraint, represent an element $\gamma = \begin{pmatrix} A & B \\ C & D \end{pmatrix}$ of the group $Sp(4, Z)$. A mathematical property of this transformation that is important for the physics of the quantum Hall effect in bilayers is that, when the imaginary part of Σ is positive (*i.e.* its eigenvalues are positive) then (6) preserves this property.

Since the precise subgroup defined by the particle-vortex symmetry for each layer depends on whether the pseudo-particle charge carriers are related by the symmetry to bosons or fermions, the same is also true for the bilayer case. We must ask for the explicit form for the matrices A through D separately for the case of bosonic and fermionic systems.

1. Fermionic Symmetry

For bilayers built from two fermionic layers the 5 symmetry generators can be taken to be given by the following transformations, which express the symmetry $\Gamma_0(2)$ acting separately on each layer, together with interlayer interchange, P . Collecting the matrices A through D into a 4×4 matrix

$$\gamma \equiv \begin{pmatrix} A & B \\ C & D \end{pmatrix} \quad (7)$$

the 5 generators are

$$\begin{aligned} T_1 &= \begin{pmatrix} 1 & \frac{1}{2}(1 + \tau_3) \\ 0 & 1 \end{pmatrix} & S_1 T_1^2 S_1 &= \begin{pmatrix} -\tau_3 & 0 \\ 1 + \tau_3 & -\tau_3 \end{pmatrix} \\ T_2 &= \begin{pmatrix} 1 & \frac{1}{2}(1 - \tau_3) \\ 0 & 1 \end{pmatrix} & S_2 T_2^2 S_2 &= \begin{pmatrix} \tau_3 & 0 \\ 1 - \tau_3 & \tau_3 \end{pmatrix} \\ \text{and } P &= \begin{pmatrix} \tau_1 & 0 \\ 0 & \tau_1 \end{pmatrix}. \end{aligned} \quad (8)$$

Here τ_k denotes the usual 2×2 Pauli matrices, with

$$\tau_1 = \begin{pmatrix} 0 & 1 \\ 1 & 0 \end{pmatrix} \quad \text{and} \quad \tau_3 = \begin{pmatrix} 1 & 0 \\ 0 & -1 \end{pmatrix}. \quad (9)$$

Most of the remainder of this paper is devoted to the exploration of the observational consequences of this symmetry.

2. Bosonic Symmetry

Before exploring the consequences the fermionic bilayer symmetry, we pause briefly to record the symmetry which would apply to bilayers built from two bosonic layers. In this case the 5 symmetry generators can instead be found

by replacing the generators T_1 and T_2 by the following two generators

$$\begin{aligned} S_1 &= \begin{pmatrix} \frac{1}{2}(1 - \tau_3) & \frac{1}{2}(1 + \tau_3) \\ -\frac{1}{2}(1 + \tau_3) & \frac{1}{2}(1 - \tau_3) \end{pmatrix} \\ S_2 &= \begin{pmatrix} \frac{1}{2}(1 + \tau_3) & \frac{1}{2}(1 - \tau_3) \\ -\frac{1}{2}(1 - \tau_3) & \frac{1}{2}(1 + \tau_3) \end{pmatrix}. \end{aligned} \quad (10)$$

For simplicity we here do not further explore the consequences of this group.

C. Identical Layers

In order to explore the consequences of the fermionic bilayer symmetry, G , it is useful to specialize to the experimentally relevant case where both of the layers are identical. In this case we may write the intra-layer conductivities as $\sigma_{11} = \sigma_{22} \equiv \sigma$, and the inter-layer conductivities as $\sigma_{12} = \sigma_{21} \equiv \tilde{\sigma}$, and so

$$\Sigma = \begin{pmatrix} \sigma & \tilde{\sigma} \\ \tilde{\sigma} & \sigma \end{pmatrix} = \sigma \tau_0 + \tilde{\sigma} \tau_1, \quad (11)$$

where $\tau_0 = I$ denotes the 2×2 unit matrix. With this choice the generator P acts trivially on Σ .

In this case the implications of the remaining four generators of G are more conveniently identified by following its action on the following combinations $\sigma_{\pm} := \sigma \pm \tilde{\sigma}$, in terms of which we have

$$\Sigma = \sigma_+ \tau_+ + \sigma_- \tau_-, \quad (12)$$

where τ_{\pm} denote the projection matrices $\tau_{\pm} = \frac{1}{2}(\tau_0 \pm \tau_1)$. Physically, the conductivities σ_{\pm} describe correlations of the currents $J_{\pm} = J_1 \pm J_2$, where J_i denotes the electrical current passing through layer ‘ i ’.

The action of G on these variables is most simply expressed by also focussing on the matrices A through D which can also be written in terms of τ_{\pm} : $A = a_+ \tau_+ + a_- \tau_-$, and so on. The integers a_{\pm} , b_{\pm} , c_{\pm} and d_{\pm} obtained in this way must satisfy $a_n d_n - b_n c_n = 1$ separately for $n = +$ and $n = -$. Similarly, the matrix C obtained in this way is even provided the constants c_{\pm} are also even.

Using these matrices it is clear that the action of G on Σ decomposes into a separate $\Gamma_0(2) \in SL(2, Z)$ action on each of σ_{\pm} — denoted $\Gamma_0^{\pm}(2)$ — with

$$\sigma_n \rightarrow \frac{a_n \sigma_n + b_n}{c_n \sigma_n + d_n}, \quad n = \pm. \quad (13)$$

It is clear that these two copies of $\Gamma_0(2)$ commute with one another.

The advantage of writing things this way is that it allows the results of ref.⁹ to be taken over in whole cloth, since this action is mathematically identical to the action of the fermionic symmetry on a monolayer. In particular, we see that writing the symmetry in this way implies

that as the temperature is varied, the topology of the flow is given as in ref.⁹. There are then potentially two qualitatively different flow patterns, which differ only in the direction of the flow along the lines drawn in Figure 1.

When the flow with decreasing temperature is in the same direction as is shown in Figure 1 then an initially large Ohmic conductivity falls with temperature, as is the case for the semiconducting monolayer systems. Continuity implies that this direction of flow also holds in the limit of bilayers which consist of two monolayers which are sufficiently far apart from one another. This need no longer be true if a transition should occur to a qualitatively different ground state at a critical separation, such as happens once inter-layer correlations become important.

The curves followed when magnetic field, B , (or carrier density, n) are varied at low temperatures can also be inferred from temperature-flow diagrams like Figure 1. For these purposes notice that different vertical lines correspond to different initial magnetic fields, and (given the direction of flow given in Figure 1) if these start from the top of the figure (as is true for comparatively low-mobility samples) then they are attracted to integer plateaux (such as those at $\sigma = 0$ and $\sigma = 1$ in Figure 1) as $T \rightarrow 0$. By comparing the position for differing magnetic fields at a common low temperature one can see that the trajectories followed as B is varied for fixed T near zero lie along the separatrix defined by the semicircle connecting $\sigma = 0$ to $\sigma = 1$ in Figure 1.⁹ In this case the existence of the symmetry implies the following generalizations of the monolayer predictions to bilayer systems.

- B1 The flow as temperatures go to zero is towards the attractive fixed points, the complete list of which is $\sigma_{\pm} = p_{\pm}/q_{\pm}$ with q_{\pm} odd.
- B2 The plateaux, $\sigma_{\pm} = p_{\pm}/q_{\pm}$ and $\sigma' = p'_{\pm}/q'_{\pm}$, which may be related by such a semicircle must satisfy the selection rule $p_n q'_n - p'_n q_n = \pm 1$ separately for $n = +$ and $n = -$.
- B3 At low temperatures (if particle-hole interchange is a symmetry) the flow between plateaux obtained as the magnetic field are varied traverses a semicircle in the complex σ_+ and σ_- planes, with the semicircle centered on the real axis. This last prediction assumes the two plateaux in question lie in the same in super-universality class — an exception to this semicircle rule arises if the varying magnetic field triggers a change in the category of the super-universality class of the transitions (as we discuss in more detail below).

If, on the other hand, there are bilayers for which an initially large conductivity gets larger as the temperatures drops, then the flow for decreasing temperature is again along the lines of Figure 1, but with the direction of the flow lines reversed from those drawn in the figure.

The existence of such a flow is consistent with the symmetry, and cannot be excluded on continuity grounds if the bilayer system in question is separated from the limit of well-separated layers by a discontinuous transition.

Indeed, we shall argue below that real bilayer systems do exhibit low-temperature fixed points of this new form, including examples^{29,30} for which $\sigma_+ = \frac{1}{4}$ and others³¹ for which the resistivity matrix is given by

$$-\Sigma^{-1} = \begin{pmatrix} 1 & 1 \\ 1 & 1 \end{pmatrix}. \quad (14)$$

These states, which arise for small inter-layer tunnelling energies, are believed to involve a superfluid condensation of the current corresponding to opposite-charge flow in the two layers, and so is necessarily separated from the limit of widely-separated layers by a phase transition. We return to a more detailed discussion of the phenomenology of these new flows below.

For any such a phase having reversed flow direction, repeating the arguments of ref.⁹ leads instead to the following predictions

B1' The flow as temperatures go to zero is towards the attractive fixed points, the complete list of which is $\sigma_{\pm} = p_{\pm}/q_{\pm}$ with p_{\pm} odd and q_{\pm} even.

B2' The plateaux, $\sigma_{\pm} = p_{\pm}/q_{\pm}$ and $\sigma' = p'_{\pm}/q'_{\pm}$, which may be related by such a trajectory must satisfy the selection rule $p_n q'_n - p'_n q_n = \pm 2$ separately for $n = +$ and $n = -$.

B3' At low temperatures, if particle-hole interchange is a symmetry, the flow between plateaux obtained as the magnetic field is varied traverses a semicircle in the complex σ_+ and σ_- planes.

As discussed above, both of the latter two predictions require there to be no discontinuous transition as B is varied which could change the category of super-universality class of symmetries that is relevant.

We see in this way the possibility of two different categories of transitions amongst bilayer systems (and two more if Γ_{θ} should also be a relevant group), with each being governed by a qualitatively different kind of flow. In both cases the trajectories of the conductivities has the shape given by Fig. 1, but the two categories differ in the direction of this flow as the temperature falls. The above predictions apply to the transitions between phases, provided that the phases involved both belong to the same category.

D. Two Layers Unresolved

More often than not experiments do not separately distinguish the currents and voltages in any one layer, and quote only a partial measurement corresponding to the total current and voltage across both layers. This is the

case both for *bona fide* bilayer systems as well as for spin-degenerate monolayers for which it is electron spin which plays the role of layer number. Because these types of measurements are so common, we pause here to state what the above symmetry statements become in this important special case.

If the layers (or spins) are not distinguished observationally, then all that is measured is the total conductivity, σ_T , which is related to the inter- and intra-layer conductivities by $\sigma_T = \sigma_{11} + \sigma_{22} + \sigma_{12} + \sigma_{21}$. In the case of identical layers this simplifies to

$$\sigma_T = 2(\sigma + \tilde{\sigma}) = 2\sigma_+. \quad (15)$$

Since we have seen that the bilayer symmetry generates a $\Gamma_0(2)$ action of σ_+ onto itself, we see that it also must generate an action on σ_T . Interestingly, because of the factor of 2 in the relationship between σ_T and σ_+ , the action generated on σ_T is *not* simply $\Gamma_0(2)$. Instead, it is the transformation $\sigma_T \rightarrow (a\sigma_T + b)/(c\sigma_T + d)$ with b even, which defines the group $\Gamma^0(2) \in SL(2, Z)$.³³ This can be seen because $\Gamma^0(2)$ is generated by T^2 and STS and $\sigma_T \rightarrow \sigma_T + 2$ and $\sigma_T \rightarrow \sigma_T/(1 - \sigma_T)$ are clearly equivalent to $\sigma_+ \rightarrow \sigma_+ + 1$ and $\sigma_+ \rightarrow \sigma_+/(1 - 2\sigma_+)$ when $\sigma_T = 2\sigma_+$.

We see that the total conductivity, σ_T , of unresolved bilayer systems enjoys a $\Gamma^0(2)$ symmetry, which has slightly different consequences than does $\Gamma_0(2)$. There are again two cases, depending on the overall direction of the flow as the temperature decreases. In particular, if the flow lines are the same as for a semiconducting monolayer, predictions *B1* – *B3* for σ_+ imply the following for σ_T :

S1 The flow as temperatures go to zero is towards the attractive fixed points, the complete list of which is $\sigma_T = p/q$ with p even and q odd.

S2 The plateaux, $\sigma_T = p/q$ and $\sigma' = p'/q'$, which may be related by varying magnetic fields at low temperatures must satisfy the selection rule $p q' - p' q = \pm 2$.

S3 For samples exhibiting particle-hole symmetry the flow between plateaux obtained by varying the magnetic field at low temperature traverses a semicircle in the complex σ_T plane, with the semicircle centered on the real axis.

As usual the latter two of these predictions requires there is no discontinuous change of ground state as the transition is made. In particular, continuity implies that these properties hold in the limit of widely-separated monolayers, for which interlayer coherence and correlations are negligible.

On the other hand, for transitions within the category for which the direction of the flow lines is reversed compared with Fig. 1 we have instead the predictions *B1'* – *B3'* for σ_+ , which in the present context become:

S1' The flow as temperatures go to zero is towards the attractive fixed points, the complete list of which is $\sigma_T = p/q$ with p odd.

S2' The plateaux, $\sigma_T = p/q$ and $\sigma'_T = p'/q'$, which may be related at low temperatures by varying the magnetic field must satisfy the selection rule $p q' - p' q = \pm 1$.³⁴

S3' For systems with particle-hole symmetry the trajectory traversed when varying B at low temperatures follows a semicircle centered on the real axis.

E. Transitions With Varying B

We see that, when particle-hole symmetry is present, the condition that the flow commute with the bilayer symmetry predicts a generalized semicircle law for the trajectories which the conductivities take at low temperatures as B is varied. However, since changes in B can also drive transitions between the different categories of phases of the bilayer systems, it is important to keep in mind that the semicircular trajectories need not follow if the system undergoes a transition from one category of phases to another. In order to understand the implications of the above predictions for real systems we must therefore keep track of how the phase of the system changes as the magnetic field, B , (or magnetic length, $\ell \propto B^{-1/2}$) varies.

1. Relevant Energy Scales

Physically, we expect that the kinds of phases which are possible for a given system depends on the relative strength of a typical inter-layer tunnelling matrix energy, Δ , compared with the inter- and intra-plane Coulomb correlation energies: V_c^{12} and V_c^{11} . In terms of these quantities we expect the following three regimes, which are schematically pictured as a ‘phase diagram’ in Figure 2:

- When Δ dominates both V_c^{11} and V_c^{12} then inter-layer tunnelling is large and the number of electrons in each layer is not separately conserved. In this case the Fermi level can fall between the energies of the states whose wave-functions are symmetric and antisymmetric under inter-layer interchange, leading to what is effectively a single-layer system. If $\Gamma_0(2)$ is the relevant group then the older predictions, $M1 - M3$ or $M1' - M3'$, given above which apply.
- If V_c^{11} is sufficiently dominant over V_c^{12} and Δ then we expect the system to behave as two independent layers, denoted ‘independent bilayers’ in the figure. In this case we expect the direction of the temperature flow to be the same as for each monolayers

separately, and if $\Gamma_0(2)$ is the relevant group then it is the predictions $B1 - B3$, above, which apply. (If the conductivities in each layer are not distinguished, then it is instead the predictions $S1 - S3$ which would be relevant.)

- When V_c^{12} and V_c^{11} are both more important than Δ , then inter-layer Coulomb correlations play a role and we expect new bilayer plateaux to appear. This includes the situation of Bose-Einstein condensation among the exciton states which form from pairs of electrons and holes in different layers. In this situation the existence of the superfluid state leads us to expect the temperature flow to be opposite to that of the decoupled monolayers, leading to the expectation that predictions $S1' - S3'$ are the relevant ones.

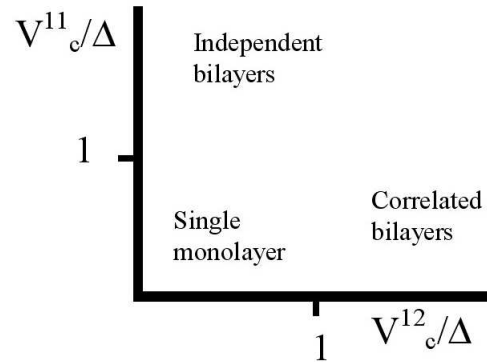


Figure 2: A sketch of the ‘phase diagram’ describing the three regimes described in the text as functions of intra-layer and inter-layer Coulomb correlation energies normalized to the tunnelling energy, Δ .

So far this entire discussion applies just as well to spin-degenerate single-layer QHE systems as it does to spin-split bilayers, provided that we identify Δ as the Zeeman-splitting matrix element which is responsible for the non-Coulomb part of the energy difference between the differing spin states.

2. Magnetic Field Dependence

Because the energies Δ , V_c^{11} and V_c^{12} all depend differently on the magnetic field strength, any particular sample traverses a trajectory in the phase diagram of Figure 2 as B is varied. It is here that we must distinguish between bilayer and spin-degenerate monolayer systems, because they differ in the B -dependence which is likely for these energy scales. This difference has important implications for the kinds of trajectories which are possible in Figure 2 for each type of system as the magnetic field is varied.

Bilayer Systems:

For bilayers Δ is not expected to depend strongly on B , but it does depend strongly on the inter-layer distance d , falling to zero exponentially quickly as the layers are separated. The precise form for this dependence is not crucial for our purposes, but for illustration we take

$$\Delta = \Delta_0 \exp[-c_1 d/a], \quad (16)$$

where a is of order the width of the well which traps the electrons into two dimensions and c_1 is a positive constant.

Similarly, we take the inter- and intra-layer Coulomb matrix elements to depend on B through their dependence on the magnetic length, $\ell \propto B^{-1/2}$, according to:

$$V_c^{11} \sim \frac{V_0^{11}}{\ell} \quad \text{and} \quad V_c^{12} \sim \frac{V_0^{12}}{\ell} \exp[-c_2 d/\ell], \quad (17)$$

where $c_2 > 0$ is another positive constant. Again the detailed expressions are not important for our purposes apart from the qualitative dependence which they imply: a monotonic growth of V_c^{11} with B and a similar growth of V_c^{12} for small B , until V_c^{12} peaks and drops exponentially for d/ℓ sufficiently large. Figure 3 shows a representative sketch of the corresponding trajectory through the phase diagram of Figure 2 which would be expected from these expressions as B is increased. The height and slope of this trajectory will be sample dependent.

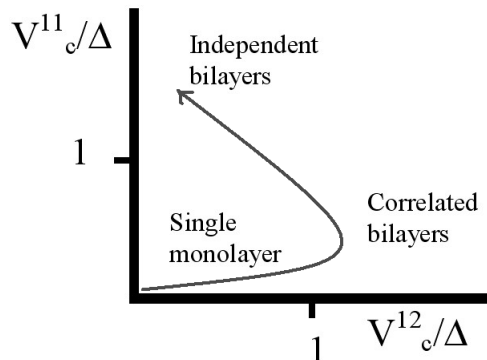


Figure 3: A sketch of the trajectory taken by a hypothetical sample through the phase diagram of Fig. 2 as magnetic field is increased.

We see from these considerations that for semiconducting bilayers at small magnetic fields Δ should always dominate, implying a description in terms of a single monolayer, for which the predictions $M1 - M3$ would be expected to hold. As B increases the Coulomb correlation energies become more important, and if V_c^{12} becomes important enough a transition to the correlated bilayer regime can occur (for which predictions like $B1' - B3'$ can apply), depending on the detailed properties of the sample in question. Eventually for large enough B we expect V_c^{11} to dominate, leading to the behaviour of independent bilayers, for which we expect $B1 - B3$ to be relevant.

As we shall see, this sequence of pictures seems to provide a good description of the kinds of phases which are seen in real Quantum Hall bilayers, although more detailed measurements to confirm or refute this picture would be most welcome.

Spin-Degenerate Monolayers:

A similar discussion can be made for spin systems, with two provisos: (i) that the conductivities of the two spins of electron are not separately measured; and (ii) that some of the relevant energy scales depend differently on B than they do for bilayer systems.

For spin systems the quantities V_c^{12} and V_c^{11} measure the spin-dependent matrix elements of the Coulomb interaction in a single plane, and so for the purposes of the qualitative estimates in this section we take both to be proportional to $1/\ell \propto B^{1/2}$. For spin systems we also take the matrix element Δ to be due to the Zeeman interaction, and so $\Delta \propto B$, with no exponential suppression of V_c^{12}/V_c^{11} at large B .

Figure 4 gives a sketch of the relative size of these energies as functions of B . In the case sketched the small- B regime is dominated by the Coulomb energies, assuming a sample with high enough mobility that Quantum Hall plateaux are visible at all. Assuming $\Gamma_0(2)$ is the relevant group, this leads to the predictions $S1 - S3$ (or $S1' - S3'$), depending on the relative importance of V_c^{11} and V_c^{12} .³⁵ For larger B the energy Δ eventually dominates to the extent that our simple B parameterization continues to hold, leading to a monolayer behaviour, with predictions $M1 - M3$.

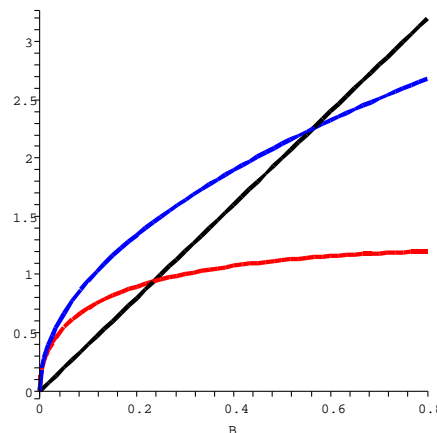


Figure 4: A sketch of the energies V_c^{11} (upper) and V_c^{12} (lower) for monolayer systems with electrons having both spins. The straight line shows the Zeeman splitting, Δ .

III. APPLICATIONS

We now explore how the above observations can be used to make nontrivial predictions for real Quantum Hall systems. What makes this tricky is the fact that when B is varied, real systems can cross over between

the different kinds of categories of phases (as described above) for which different symmetry predictions apply. Such transitions are problematic because we only know that the predictions hold for transitions amongst plateaux within any one of these categories, and not for transitions in between different categories.

In order to see how the above arguments may be used in practice, we now examine their implications in more detail for several bilayer systems for which experimental results are available in the literature. Our strategy for doing so relies on the fact that for each category described above there are three different nontrivial predictions: (i) those governing the kinds of plateaux allowed (*e.g.* $B1$, $S1$, $B1'$ or $S1'$); (ii) those governing the selection rules which express the plateaux that may be obtained from any given one by varying B (*e.g.* $B2$, $S2$, $B2'$ or $S2'$); and (iii) those describing the shape of the trajectories which the conductivities take as B is varied between these plateaux (*e.g.* $B3$, $S3$, $B3'$ and $S3'$). Our strategy is to use the kinds of plateaux to identify the category of phases which are present for each value of B . Once these categories are identified in this way we may then test the existence of the symmetry by asking whether the other two predictions hold for transitions within each category.

A. Unresolved Bilayers

Most of the bilayer systems which have been studied experimentally fall into our ‘single layer’ category, for which only the total conductivity, σ_T , is measured. For the purposes of this section we take the example of refs.^{29,30}, which together provided the first evidence for new kinds of Hall plateaux in these systems having $\sigma_T = \frac{1}{2}$. Both of these references provide explicit traces of the total Ohmic and Hall resistances at low temperatures as functions of magnetic field. A representative trace as given in ref.²⁹ is reproduced here as Figure 5.

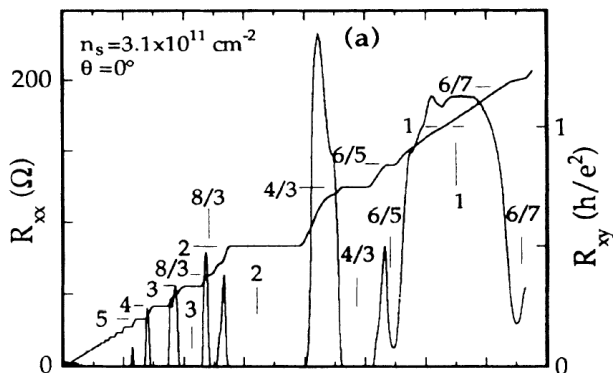


Figure 5: Resistance traces for a bilayer system, reproduced from Fig. 2 of Suen *et.al.*²⁹. B increases to the right in this plot, with the same scale as for Fig. 7.

The pattern of Hall plateaux visible in Fig. 5 appear to be well described by the trajectory through the phase

diagram sketched in Fig. 3, above. At weak fields a series of integer plateaux are seen with $\sigma_T = 5, 4, 3$ culminating in the first fractional state at $\sigma_T = \frac{8}{3}$. This is what is expected when tunnelling dominates, including the appearance of the fractional state once the Coulomb interaction becomes large enough to compete with the others. Throughout this region we expect predictions $M1 - M3$ to apply, including the selection rule $|pq' - p'q| = 1$ (which can be seen from Fig. 5). The success of the picture can be tested on samples with particle-hole symmetry due to the prediction $M3$ of a semicircle law for these transitions, for which measurements would be most welcome.

Although all of the plateaux visible in Fig. 5 have odd denominators, they cannot all be explained by the regime for which Δ dominates. Instead a transition occurs to the independent-bilayer category, for which predictions $S1 - S3$ apply. The plateaux in Fig. 5 with $\nu > 8/3$ do indeed have even numerators, but this in itself is not sufficient to distinguish between $M1$ and $S1$. That the transition to $S1 - S2$ occurs is instead seen in Fig. 5 from the change to the selection rule $|pq' - p'q| = 2$ for the plateaux above $\sigma_T = \frac{8}{3}$, indicating that $S2$ applies rather than $M2$. For particle-hole symmetric samples $S3$ the prediction of a semicircle law again applies, but one which links plateaux obeying the new selection rule ($S2$) rather than the old one ($M2$).

Of all the visible plateaux the selection rule $|pq' - p'q| = 2$ only fails for the transition from $\sigma_T = \frac{6}{5}$ to $\sigma_T = \frac{6}{7}$, but there also appears to be considerable structure between these two plateaux (including the incipient state at $\sigma_T = 1$ — more about which below) which indicates unresolved intervening physics.

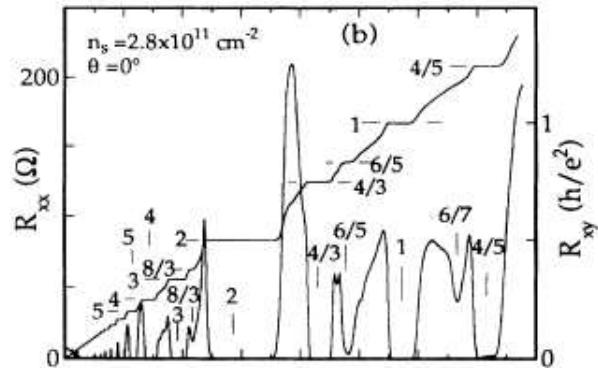


Figure 6: Resistance traces, from Fig. 2 of Suen *et.al.*²⁹, for the same bilayer system as Fig. 5 but with smaller carrier density, n_s , and so smaller effective interlayer separation, d .

Figure 6 displays the plateaux found for the same sample but with a smaller carrier density, n_s (obtained by applying a different bias voltage). As discussed in ref.²⁹, this lower carrier density implies a lower effective interlayer separation, d , which we argue leads to this sample being better described by a trajectory which moves further to the right in the phase diagram of Fig. 3, leading to nontrivial interlayer Coulomb correlations. For such a

regime the predictions $S1' - S3'$ would apply, implying that the observed plateaux should have $\sigma_T = p/q$ with p odd, as well as the re-emergence of the selection rule $|pq' - p'q| = 1$. This picture appears to be borne out by Fig. 6, which differs from Fig. 5 mainly in the appearance of the new state at $\sigma_T = 1$. Such a state agrees with the prediction $S1'$ but would be forbidden for the independent-bilayer states which surround it, since these must all have $\sigma_T = p/q$ with p even.³⁶ And it is further supported by the re-appearance of the selection rule $|pq' - p'q| = 1$ for the transitions $\frac{6}{5} \rightarrow 1$ and $1 \rightarrow \frac{4}{5}$ (or the $\frac{6}{7}$ state indicated in figure 6, though there is no well developed plateau for that state), as dictated by prediction $S2'$. A gold-plated signal would be the observation of the trajectory taken in the complex σ_T plane during these transitions, since this should be described by the semicircle trajectories predicted by $S3'$ in samples exhibiting particle-hole symmetry.

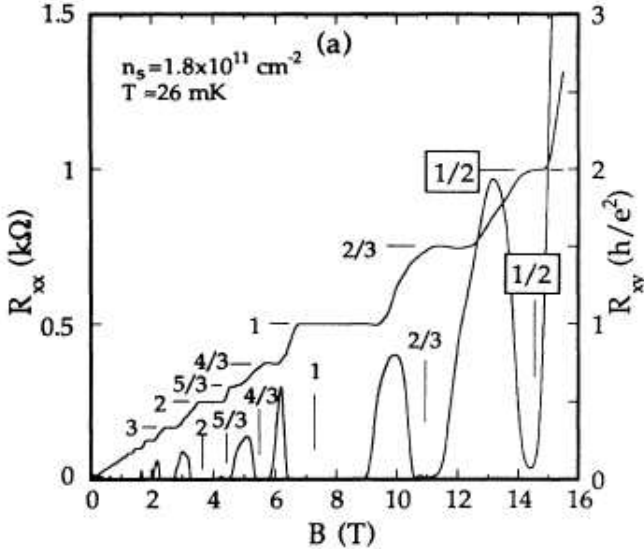


Figure 7: Resistance traces for the same bilayer system as in Figs. 5 and 6, but with still smaller n_s and so smaller effective d . Data taken from Fig. 3 of Suen *et.al.*²⁹.

For still smaller d the behaviour of the sample continues to evolve. This may be seen from the resistance traces given in Figure 7, which differ considerably from those of Figs. 5 and 6. This figure agrees in many ways with what would be expected from the trajectory of Fig. 3, including a phase of interlayer Coulomb correlations, although there are also a few troubling aspects to this description, as we now describe.

As discussed earlier, we qualitatively expect that shrinking d causes Δ to grow, and this should increase the value of the field, B_c , at which the transition occurs from Δ -domination to domination by V_c^{11} . We also expect the regime of independent bilayers to become narrower, and perhaps disappear, depending on how quickly Δ grows compared with V_c^{12} .

Whether these are borne out by Fig. 7 depends on the regime with which each of the plateaux is associated. In-

deed all of the observed plateaux in Fig. 7, except for the one at $\sigma_T = \frac{1}{2}$, occur at fractions with odd denominators and so could be due to a tunnelling-dominated monolayer ($M1 - M3$). On the other hand, both plateaux $\sigma_T = \frac{4}{3}$ and $\frac{2}{3}$ have even numerators and so could instead be interpreted as being due to the independent-bilayer category of phases ($S1 - S3$). These two options can be distinguished using the selection rule ($M2$ or $S2$), and since Fig. 7 indicates this to be $|pq' - p'q| = 1$ — apart from the $\frac{5}{3} \rightarrow \frac{4}{3}$ transition, see below — it is the monolayer option which appears to be most appropriate. Under this interpretation there would be a direct transition between $\sigma_T = \frac{2}{3}$ and $\sigma_T = \frac{1}{2}$ from the monolayer regime ($M1 - M3$) to the regime of inter-layer Coulomb correlations ($S1' - S3'$). If this picture is right then monolayer-type semicircle trajectories ($M3$) are predicted for all of the transitions in particle-hole symmetric samples, at least up to $\sigma_T = 1$.

The $\frac{5}{3} \rightarrow \frac{4}{3}$ transition is the only exception to the selection rule $|pq' - p'q| = 1$, and the interpretation of this transition is problematic within the present framework. However this could indicate the existence of a poorly-resolved state in between these two plateaux, similar to the way the incipient $\sigma_T = 1$ state causes a funny selection rule between the $\frac{6}{5}$ and $\frac{6}{7}$ states in Fig. 5. A more baroque interpretation takes the $\frac{5}{3} \rightarrow \frac{4}{3}$ transition to mark the point where the transition is made into the independent-bilayer regime ($S1 - S3$), in which case Fig. 7 would require a further transition to the correlated bilayer regime ($S1' - S3'$) for the $\sigma_T = 1$ state, followed by a re-entrant independent-bilayer state at $\sigma_T = \frac{2}{3}$. Since such a picture would also require a second transition to the correlated regime to account for the $\sigma_T = \frac{1}{2}$ state, and since such an ordering of states is difficult to reconcile with the sketch of Fig. 3, we do not pursue this possibility further here.

This analysis shows how the fact that there are three kinds of predictions may be used both to reconstruct the regime which is relevant, and to test the implications of the underlying $\Gamma_0(2)$ symmetry of each Quantum Hall layer.

B. Resolved Bilayer Systems

The previous discussion involved only measurements of the total conductivity, σ_T , but more can be said if both σ and $\tilde{\sigma}$ are separately known. We now describe the implications of the symmetry for one such a measurement.

Ref.³¹ examines a crossover between two different plateaux — one with total filling factor $\nu_T = 2$ and the other with $\nu_T = 1$ — and explicitly give enough information to determine separately all of the complex components of the resistivity tensor, ρ and $\tilde{\rho}$ as follows. Figure 9 reproduces the four resistance traces, A , B , C and D , given in ref.³¹, where the sign of trace C is reversed. Traces B and C directly give the inter-layer

resistivities,³⁷

$$\rho_B = \tilde{\rho}_{xy} \quad \text{and} \quad \rho_C = -\tilde{\rho}_{xx} \quad (18)$$

while A and D represent intra-layer resistivities,

$$\rho_D = \rho_{xy}. \quad (19)$$

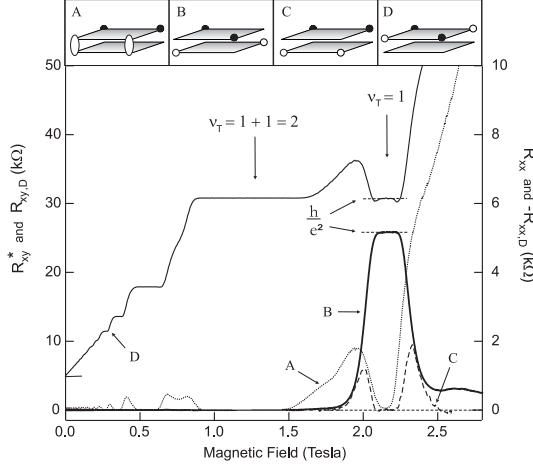


Figure 8: Resistance traces for the bilayer systems reproduced from Kellogg *et.al.*³¹. The sign of trace C is reversed in this plot.

The extraction of the intra-layer Ohmic resistivity, ρ_{xx} , from the data is a little less direct. Denoting the 2×2 complex resistivity tensor by

$$-\Sigma^{-1} = R = \begin{pmatrix} \rho & \tilde{\rho} \\ \tilde{\rho} & \rho \end{pmatrix} \quad (20)$$

then the eigenvalues of R ,

$$\rho_{\pm} = \rho \pm \tilde{\rho}, \quad (21)$$

are related to the corresponding eigenvalues of Σ by

$$\sigma_{\pm} = \sigma \pm \tilde{\sigma} = -\frac{1}{\rho_{\pm}}. \quad (22)$$

Trace A of Fig. 8 then measures the Ohmic resistance corresponding to the total conductivity

$$\sigma_T = 2(\sigma + \tilde{\sigma}) = 2\sigma_+ = -\frac{2}{\rho_+}, \quad (23)$$

Consequently $\rho_T = -1/\sigma_T = \rho_+/2$, and so trace A gives $\rho_A = \rho_{+xx}/2$, or

$$\rho_{xx} = 2\rho_A + \rho_C. \quad (24)$$

Given these resistivities, we see that the two plateaux observed in³¹ occur for

$$R_1 = \begin{pmatrix} 1 & 0 \\ 0 & 1 \end{pmatrix} \quad \text{and} \quad R_2 = \begin{pmatrix} 1 & 1 \\ 1 & 1 \end{pmatrix}, \quad (25)$$

which respectively correspond to $(\rho_+, \rho_-)_1 = (1, 1)$ and $(\rho_+, \rho_-)_2 = (2, 0)$, and so $(\sigma_+, \sigma_-)_1 = (-1, -1)$ and $(\sigma_+, \sigma_-)_2 = (-\frac{1}{2}, \infty)$. Notice that R_2 is not invertible.

According to our proposal, the action of $Sp(4, Z)$ on the bilayer system should manifest itself as $\Gamma_0(2)$ acting separately on σ_+ and σ_- , with implications $B1 - B3$ or $B1' - B3'$, depending on the category of flows between phases in which the system lies. For $\sigma_{\pm} = p_{\pm}/q_{\pm}$ prediction $B1$ means in particular that q_{\pm} is odd while $B1'$ implies p_{\pm} is odd while q_{\pm} is even. We see from this that $\sigma_+ = \sigma_- = -1$ corresponds to condition $B1$ while $\sigma_+ = -\frac{1}{2}$ corresponds to $B1'$, and so the transition observed in ref.³¹ is *between* the two different categories of bilayer flows.

Because the transition is not purely within one category or another we have no right to expect either of the sets of predictions $B1 - B3$ or $B1' - B3'$ to apply. Interestingly enough prediction $B2$ does still seem to apply, since both $\sigma_+ : -1 \rightarrow -\frac{1}{2}$ and $\sigma_- : -1 \rightarrow \infty$ satisfy the selection rule $|pq' - p'q| = 1$ if we interpret $\infty = 1/0$.

IV. CONCLUSIONS

We have seen that the emergence of modular symmetries in two-dimensional semiconductors has striking observational consequences both for bilayer and spin-degenerate Quantum Hall systems, just as it did in the better-established case of monolayer semiconducting heterostructures. These consequences include predictions for the pattern of allowed Hall plateaux; predictions for selection rules restricting which plateaux can be obtained from which by varying magnetic fields and charge densities at low temperatures; and, for samples with particle-hole symmetry, semicircle laws for the trajectories taken through the conductivity plane during these transitions. Experimental verification of these predictions would provide support for the picture that such modular symmetries are to be expected on very general grounds for two-dimensional systems. We hope these observations will stimulate experimental tests of these predictions.

Acknowledgements

We thank M. Hilke for helpful discussions. Our research has been assisted by research funds provided by N.S.E.R.C. (Canada), the Killam Foundation, McGill and McMaster Universities and Enterprise Ireland (E.I. Basic Research Grant no. SC/1998/739). B.D. wishes to thank the Perimeter Institute and C.B. thanks the Dublin Institute for Advanced Studies for their kind hospitality at various times while these ideas were being developed.

-
- ¹ D.C. Tsui, *Physica B*, **164**, 59 (1990)
- ² J.P. Eisenstein, M.P. Lilly, K.B. Cooper, L.N. Pfeiffer and K.W. West, *Physica E*, **6**, 29 (2000), (cond-mat/9909238)
- ³ S. H. Simon, *Solid State Comm.*, **134**, 81 (2005) (cond-mat/0503309)
- ⁴ R.B. Laughlin, *Phys. Rev. Lett.*, **50**, 1395 (1983)
- ⁵ J. Polchinski, *Effective Field Theory of the Fermi Surface*, Lectures presented at TASI 92, Boulder, CO, Jun 3-28, 1992, Published in Boulder TASI 92:0235-276 (QCD161:T45:1992) (hep-th/9210046); R. Shankar, *Rev. Mod. Phys.* **66**, 129 (1994), (cond-mat/9307009).
- ⁶ C.P. Burgess, Rim Dab and B.P. Dolan, *Phys. Rev. B* **62**, 15359 (2000) (cond-mat/9911476); C.P. Burgess and C.A. Lutken, *Phys. Lett. B* **451**, 365 (1999) (cond-mat/9812396).
- ⁷ C.A. Lütken and G.G. Ross, *Phys. Rev. B* **45**, 11837 (1992); *Phys. Rev. B* **48**, 2500 (1993).
- ⁸ D-H. Lee, S. Kivelson and S-C. Zhang, *Phys. Lett. B* **68**, 2386 (1992); S. Kivelson, D-H. Lee and S-C. Zhang, *Phys. Rev. B* **46**, 2223 (1992).
- ⁹ C.P. Burgess and B.P. Dolan, *Phys. Rev. B* **63**, (2001) 155309 (hep-th/0010246).
- ¹⁰ S.S. Murzin, M. Weiss, A.G.M. Jansen and K. Eberl *Phys. Rev. B* **66**, 233314 (2002)
- ¹¹ E. Witten, in Shifman, M. (ed.) et al. *From fields to strings*, vol. 2, 1173 (2004) World Scientific, (hep-th/0307041)
- ¹² C.P. Burgess and B.P. Dolan, *Phys. Rev. B* **65**, 155323 (2002) (cond-mat/0105621);
- ¹³ D. Shahar, D.C. Tsui and M. Shayegan, *Science* **274**, 589 (1996).
- ¹⁴ See however: B.P. Dolan, *Phys. Rev. B* **62**, 10278 (2000) (cond-mat/0002228)
- ¹⁵ C.P. Burgess and Brian P. Dolan, *The Quantum Hall Effect in Graphene: Emergent Modular Symmetry and the Semi-circle Law* (cond-mat/0612269)
- ¹⁶ A. Shapere and F. Wilczek, *Nuc. Phys. B* **320**, 669 (1989)
- ¹⁷ H.P. Wei, D.C. Tsui, M.A. Paalanen and A.M.M. Pruisken, *Phys. Rev. Lett.* **61**, 1294 (1988); L. Engel *et.al.*, *Surf. Sci.* **229**, 13 (1990).
- ¹⁸ The experimental situation more recently has become somewhat murky, with new evidence for¹⁹ and against²⁰ scaling behaviour. We predict scaling and universality to occur in any system to which the particle-vortex duality we propose applies.
- ¹⁹ P.T. Coleridge, *Phys. Rev. B* **60**, 4493 (1999); P.T. Coleridge, *Solid State Comm.* **112**, 241 (1999).
- ²⁰ D. Shahar, M. Hilke, C.C. Li, D.C. Tsui, S.L. Sondhi and M. Razeghi, *Solid State Comm.* **107**, 19 (1998) (cond-mat/9706045)
- ²¹ For a review with references see: S-C. Zhang, *Int. J. Mod. Phys. B* **6**, 25 (1992).
- ²² S. Weinberg, *Superconductivity for Particular Theorists*, published in the Festschrift honoring Yoichiro Nambu on his 65th birthday, *Prog. Theor. Phys. Suppl.* **86**, 43 (1986).
- ²³ For a review of the composite fermion picture see e.g. *Composite Fermions: A unified view of the Quantum Hall Regime* ed. O. Heinonen, (1998) World Scientific.
- ²⁴ D. Arovas, J.R. Schrieffer and F. Wilczek, *Phys. Rev. Lett.* **53**, 722 (1984).
- ²⁵ C.A. Lütken, *Nuc. Phys. B* **396**, 670 (1993)
- ²⁶ Y. Georgelin and J-C. Wallet, *Phys. Lett. A* **224**, 303 (1997); Y. Georgelin, T. Masson and J-C. Wallet, *J. Phys. A* **30** 5065 (1997);
- ²⁷ When the spins are not well split it is a smaller group that is relevant, B.P. Dolan, *Phys. Rev. B* **62**, 10278 (2000)
- ²⁸ N. Koblitz, *Introduction to Elliptic Curves and Modular Forms. 2nd Edition*, Graduate Texts in Mathematics, No.97, Springer-Verlag (1984)
- ²⁹ Y.W. Suen, L.W. Engel, M.B. Santos, M. Shayegan and D.C. Tsui, *Phys. Rev. Lett.* **68**, 1397 (1992)
- ³⁰ J.P. Eisenstein, G.S. Boebinger, L.N. Pfeiffer, K.W. West and Song He, *Phys. Rev. Lett.* **68**, 1383 (1992)
- ³¹ M. Kellogg, I.B. Spielman, J.P. Eisenstein, L.N. Pfeiffer and K. West, *Phys. Rev. Lett.* **88**, 126804 (2002)
- ³² S.M. Girvin and A.H. MacDonald, *Multi-Component Quantum Hall Systems: The Sum of their Parts and More*, (cond-mat/9505087)
- ³³ The notation is that of²⁸
- ³⁴ Recall here that $\sigma_+ = \text{odd/even}$ so we may write $\sigma_+ = k/2l$ where k is odd. Then $\sigma_T = 2\sigma_+ = k/l$, and so $k'(2l) - k(2l') = \pm 2$ implies $k'l - k'l' = \pm 1$.
- ³⁵ Alternatively, if Γ_θ is the relevant group – as appears to be the case for graphene – the analogs of $S1 - S3$ are required for this group¹⁵.
- ³⁶ More evidence that the $\sigma_T = 1$ plateau is due to inter-layer correlations comes from its fragility to tilting the applied magnetic field³².
- ³⁷ The conversion from resistance to resistivity is immediate since the sample used in ref.³¹ is square.